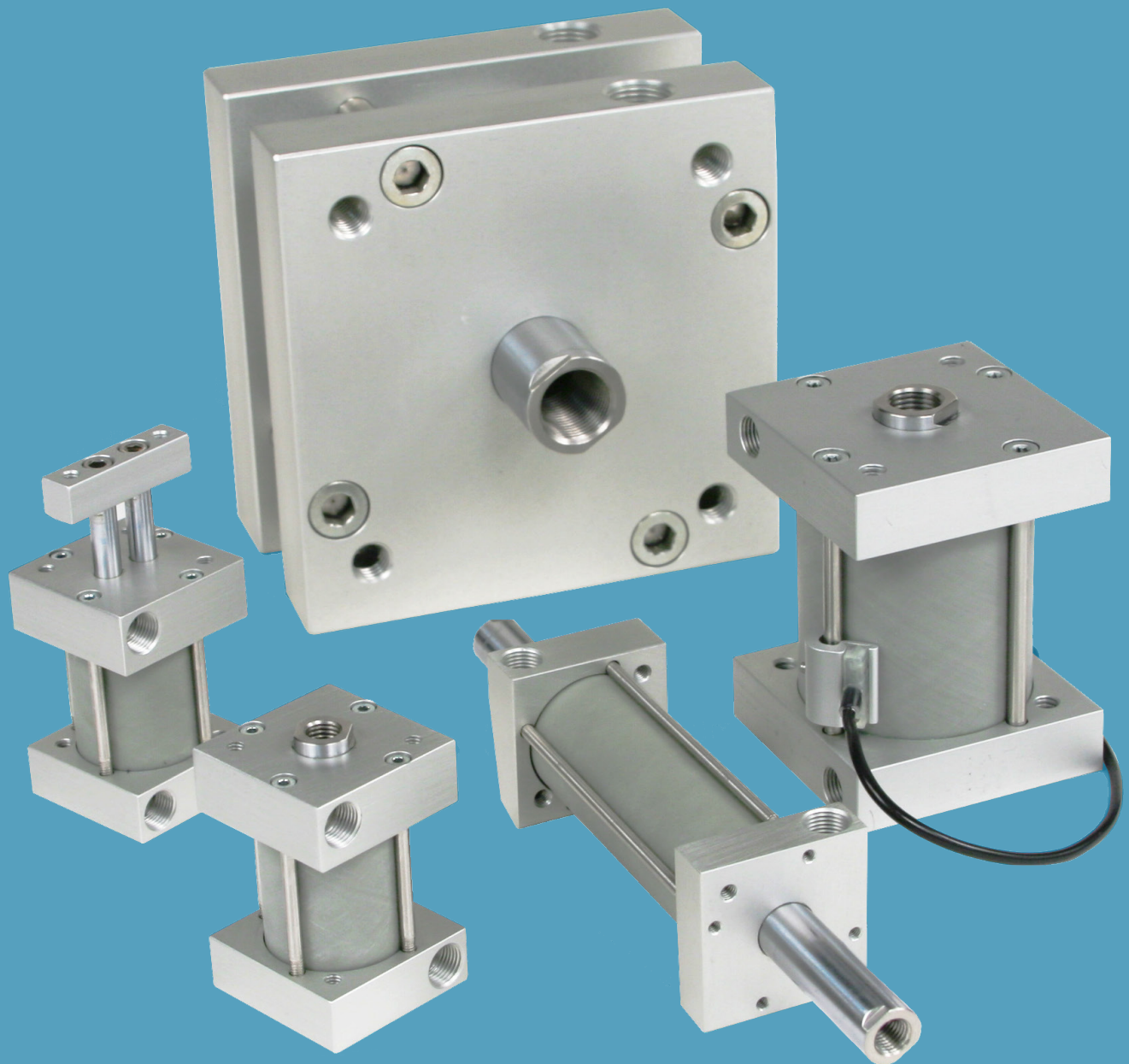


FABCO-AIR

Square Pancake[®] II Air Cylinders

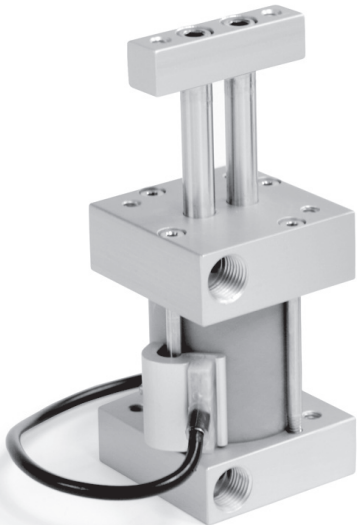


Product Index



Standard Series SSD, SSR, SSX, SWD, STD

How it works	3
How to Order	5
Dimensions	6 - 9
Options	8, 9
Weights	7



Nonrotating , Twin Rod Series SND

How it works	10
How to Order	11
Dimensions	12, 13
Options	12, 13
Weights	12

Magnetic Position Sensing

Sensors	15
Quick disconnect cordsets	15

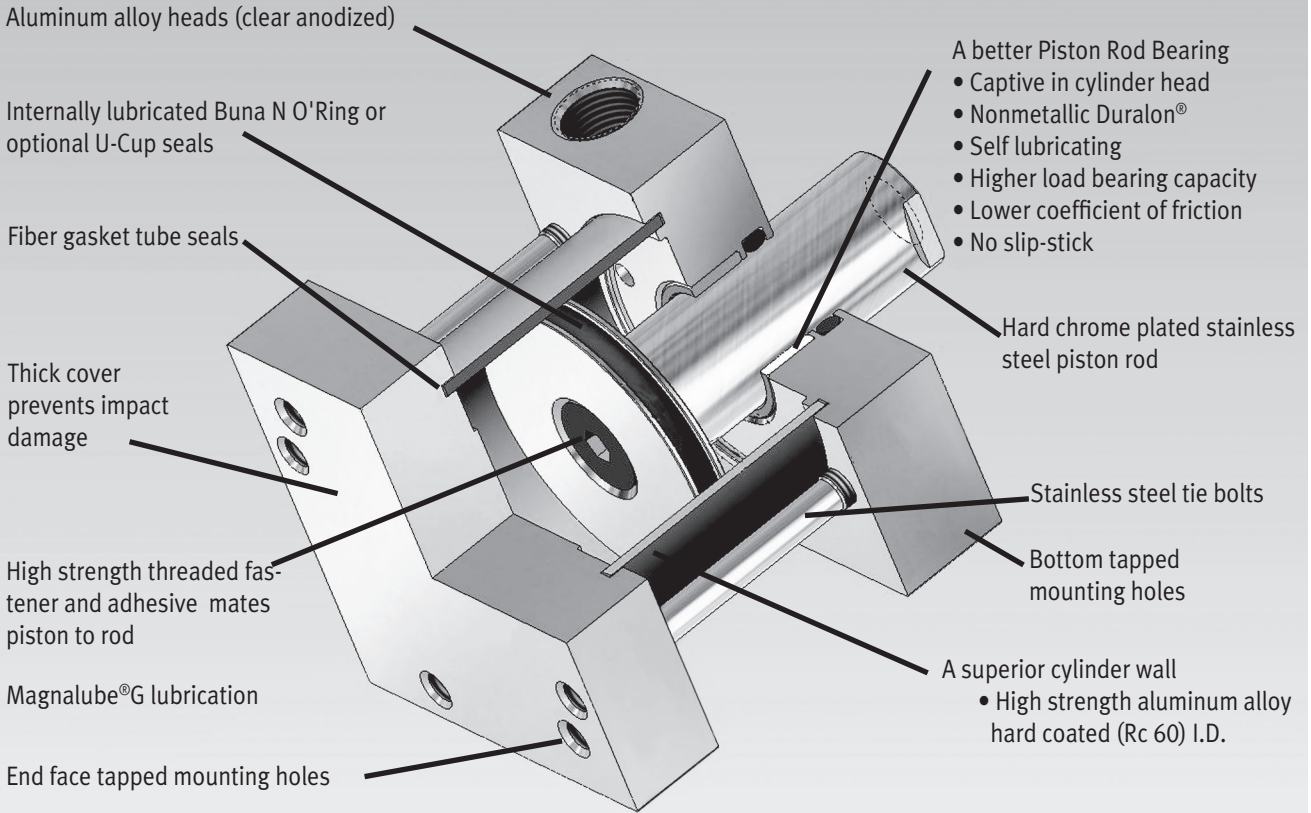
Accessories

All series	14
------------------	----

- Duralon® is a registered trademark of Rexnord Corp.
- Magnalube®-G is a registered trademark of Carleton Stuart Corp.
- Multi-Power® and Pancake® are registered trademarks of Fabco-Air, Inc.
- Dacron®, Teflon® and Viton® are registered trademarks of DuPont Corp.

Continuing the Space Saving Tradition. . .

The Square Pancake® II Direct Interchange Air Cylinders



Superior Interchangeable Industrial Air Cylinders

Standard cylinder tube changed from composite to aluminum on August 1st 2025 - Composite available as an option

Innovation – For over 40 years our famous Pancakes® have dominated as the world's first compact air cylinder line. Today, backed by decades of engineering and manufacturing innovation, our new Pancake® II aluminum body air cylinders continue in the Pancake® tradition with a wide selection of models and options.

Packed with value – Stainless steel tie bolts and aluminum spacers lock precision machined heads tightly around a unique, high strength, aluminum cylinder barrel. The high strength aluminum alloy, hard coated (Rc 60) I.D. tube provides long life and superior performance. Combined with hard chrome plated stainless steel piston rods and a unique, nonmetallic rod bearing, the new Fabco-Air cylinder assembly assures optimal operation and longer product life.

Exceptional Piston Rod Bearing – The better the bearing, the more cycle life you can expect from your air cylinders. Pancake® II cylinders incorporate a truly superior rod bearing material - Duralon® with the same field-proven performance you have come to expect from the six other Fabco-Air cylinder families.

Duralon® Rod Bearings Excel

Load Capacity (psi)	Friction Properties	Slip-Coefficient	stick
Machine Design 1972/73			
Bearing Reference Issue			
Porous Bronze..... 4,500	Steel-on-steel.....	.50	Yes
Porous iron 8,000	Bronze-on-steel.....	.35	Yes
Phenolics 6,000	Sintered Bronze-on-steel		
Nylon® 1,000	with mineral oil13	No
TFE 500	Bronze-on-steel		
Reinforced Telfon® ... 2,500	with mineral oil16	No
*TFE fabric..... 60,000	Copper lead alloy-on-steel	.22	Yes
Polycarbonate 1,000	Acetal-on-steel.....	.20	No
Acetal..... 1,000	Nylon-on-steel32	Yes
Carbon-graphite..... 600	Duralon-on-steel.....	.05 - .16	No

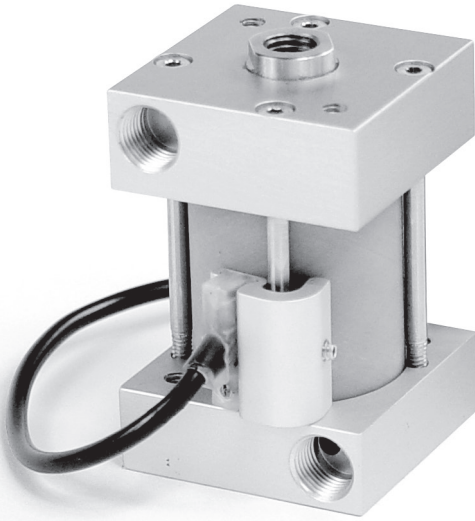
* Shows Duralon bearing classification. Not to be used for design purposes.

Printed with permission by Rexnord Corp.

Duralon® is a composite of a Teflon®/Dacron® fabric liner bonded to a supporting filament-wound, high strength, fiberglass and epoxy resin shell. Resistant to corrosion, moisture and temperature to 325°F, the bearing is reliable in any environment. It has an extremely high load bearing capacity, very low friction, and will not gall or score the piston rod (see physical properties in the table above).

Square Pancake® II Cylinders

Available in 5 styles
 7 Bore sizes 3/4" thru 4"
 Strokes to 4" standard



- Double acting, single rod
- Double acting, double rod
- Double acting, hole thru double rod
- Single acting, spring retracted rod
- Single acting, spring extended rod

Ratings – Standard Units all Series

- Body..... High strength aluminum alloy
- Heads..... Clear anodized aluminum alloy
- Tie BoltsStainless steel
- Rod..... Chrome plated stainless steel
- Piston..... Aluminum alloy
- Rod end.....Female thread with wrench flats
- Ports.....Position #1
- Seals Internally lubricated Buna-N
- LubricationMagnalube®-G
- Rod bushing PTFE composite bearing
- Stroke tolerance± 1/64"
- Media..... Air
- Pressure rating, maximum..... 200 psi
- Minimum recommended operating pressure 15 psi
- Temperature rating
 Cylinder-25° to +221°F
 (-32° to +105°C)
- Temperature rating
 Electronic sensors-4° to +176°F
 (-20° to +80°C)

Approximate Spring Forces

Bore	Maximum Force (lbs)	Spring Rate (lbs/inch) for Stroke Range			
		0.12 to 1" Stroke	1.001 to 2" Stroke	2.001 to 3" Stroke	3.001 to 4" Stroke
3/4 (2)	10.00	6.00	3.00	2.00	1.50
1-1/16 (3)	13.00	6.50	3.25	2.17	1.63
1-1/2 (4)	13.00	6.50	3.25	2.17	1.63
2 (5)	13.00	6.50	3.25	2.17	1.63
2-1/2 (6)	25.00	12.50	6.25	4.17	3.13
3 (7)	25.00	12.50	6.25	4.17	3.13
4 (8)	25.00	12.50	6.25	4.17	3.13

Cylinder Sizing Guide

Bore Diameter (inch)	3/4	1-1/16	1-1/2	2	2-1/2	3	4
Rod Diameter (inch)	0.31	0.50	0.63	0.75	0.75	0.88	1.00
Rod Area (in ²)	0.08	0.19	0.31	0.44	0.44	0.60	0.79
Push Area (Single Rod) (in ²)	0.44	0.88	1.76	3.14	4.91	7.07	12.57
Push Area (Double Rod) (in ²)	0.36	0.69	1.45	2.66	4.47	6.47	11.78
Pull Area (in ²)	0.36	0.69	1.45	2.66	4.47	6.47	11.78

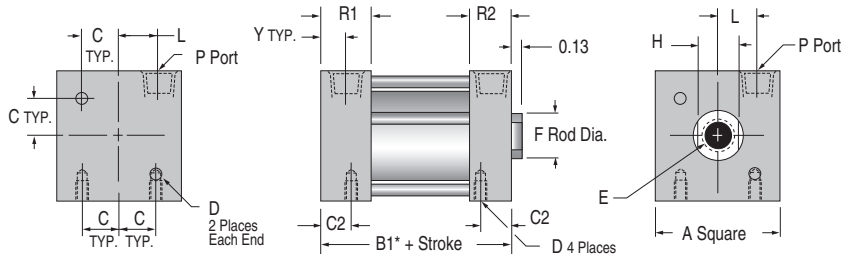
How to Order

<p>Series</p> <p>S - Square Pancake® II</p>		<p>Action</p> <p>D - double acting R - single acting, spring retract (Model S only) X - single acting, spring extend (Model S only)</p>		<p>Bore</p> <p>2 - 3/4" 3 - 1-1/16" 4 - 1-1/2" 5 - 2" 6 - 2-1/2" 7 - 3" 8 - 4"</p>		<p>Stroke</p> <p>0.125 - 1/8" 0.250 - 1/4" 0.375 - 3/8" 0.500 - 1/2" etc., thru 4.000 - 4" (see pages 6 & 7 for standard strokes)</p>		<p>Note: Special strokes are available on request. Contact Engineering or your local Fabco-Air Distributor.</p>	
<p>Model</p> <p>S - single rod W - double rod T - double rod, hole thru</p>									
Model Number	Series	Model	Action	Bore	Mounting	Stroke	Options		
					<p>Mounting</p> <p>Tapped mounting holes are standard in the basic model and need not be specified. For other mounting specify only one option code.</p> <p>Leave Blank - Basic Model PM - Pivot mount, pin 90° from port SM - Pivot mount, pin in-line with port</p>				
					<p>Options Enter in alphabetical order</p> <p>B - Bumpers, both ends¹ BF - Bumper, front only¹ BR - Bumper, rear only¹ CT - Composite Tube E - Magnet on piston for position sensing (see sensors page 15; length adds page 8) 3/8" stroke minimum² J - Failsafe operation (single acting, spring retract models) L - Low friction seals (see length adds page 8) Q - Low temperature operation (-40°F to +200°F) TCF - Coarse female rod thread, dimension E (page 7) TCM - Male rod end with coarse thread (page 8) TFM - Male rod end with fine thread (page 8) TN - Non-threaded rod T1, T4 - Additional adhesive mounted dovetail extrusions located in position 1 or 4 V - Viton seals for media compatibility (-15°F to +225°F) W - Rod wiper, Buna N only (page 8) X - EXTRA Rod extension Example: X0.5 = 1/2" EXTRA Rod Extension X1 = 1" EXTRA Rod Extension</p>				
<p>How to Order</p> <p>1. Specify S, Model, Action, and Bore 2. Specify optional Mounting (if required) then Stroke 3. Specify the Options in alphabetical order</p> <p>Ordering example #1: SSD4-PM2.500-BFV</p> <p>Square Pancake® II single rod, double acting, 1-1/2" bore, pivot mount (pin 90° from port), 2-1/2" stroke, front bumpers, and Viton seals.</p> <p>Ordering example #2: SSD3-1.000</p> <p>Square Pancake® II single rod, double acting, 1-1/16" bore, standard tapped mounting holes, and 1" stroke.</p>					<p>¹ Stroke is reduced by .03 per end; .06 for option B; Spring retracted, BR only; Spring extended, BF only.</p> <p>² Not available with Viton seals or low temperature seals.</p>				

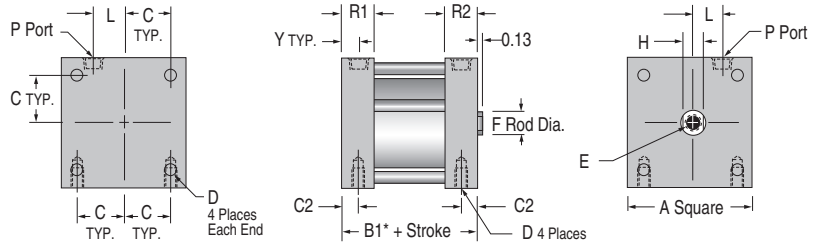
Square Pancake II Cylinders

Model SSD Double Acting, Single Rod

Bore Sizes
 3/4", 1-1/16", 1-1/2", 2"



Bore Sizes
 2-1/2", 3", 4"



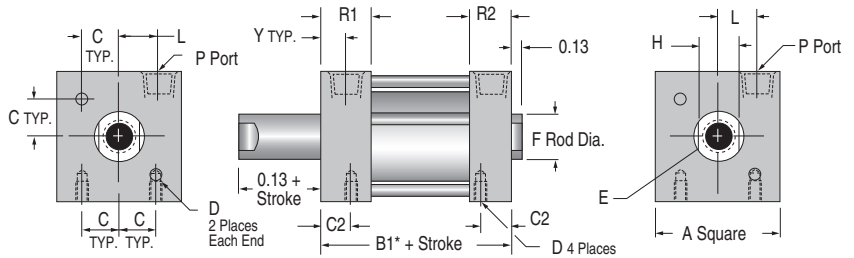
***Note: Some options effect cylinder length.**

Standard Strokes – All Models: • 1/8 • 1/4 • 3/8 • 1/2 • 5/8 • 3/4 • 7/8 • 1 • 1-1/4 • 1-1/2 • 1-3/4 • 2 • 2-1/2 • 3 • 3-1/2 • 4
 Special strokes available on request. Contact Engineering or your local Fabco-Air Distributor

Model SWD Double Acting, Double Rod

Bore Sizes
 3/4", 1-1/16", 1-1/2", 2"

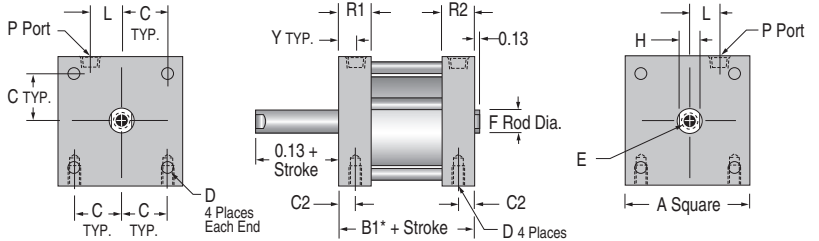
Model STD Double Acting, Hole Thru Double Rod



Hole Thru Diameter (STD)

Bore	Female Rod Thread	Male Rod Thread
3/4 (2)	0.14	0.09
1-1/16 (3)	0.22	0.16
1-1/2 (4)	0.28	0.19
2 (5)	0.38	0.25
2-1/2 (6)	0.38	0.25
3 (7)	0.44	0.31
4 (8)	0.50	0.38

Bore Sizes
 2-1/2", 3", 4"



***Note: Some options effect cylinder length.**

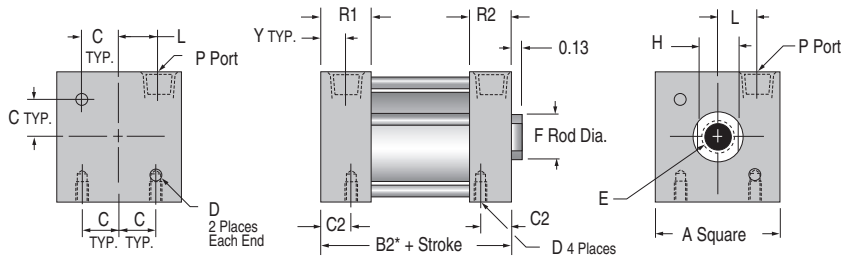
Dimensions (inches)

Bore	A	B1*	B2* for Stroke Range				B3* for Stroke Range				C	C2	D
			0-1	1.001-2	2.001-3	3.001-4	0-1	1.001-2	2.001-3	3.001-4			
3/4 (2)	1.25	0.75	1.00	1.56	2.13	2.69	1.25	1.81	2.38	2.94	0.38	0.28	#6-32 UNC
1-1/16 (3)	1.50	1.25	1.25	1.88	2.50	3.13	1.75	2.38	3.00	3.63	0.50	0.38	#8-32 UNC
1-1/2 (4)	2.00	1.25	1.25	1.88	2.50	3.13	1.75	2.38	3.00	3.63	0.69	0.31	#10-24 UNC
2 (5)	2.50	1.31	1.31	1.94	2.56	3.19	1.81	2.44	3.06	NA	0.88	0.38	1/4-20 UNC
2-1/2 (6)	3.25	1.66	1.66	2.54	3.41	4.29	2.39	3.27	3.29	NA	1.18	0.42	5/16-18 UNC
3 (7)	3.75	1.71	1.71	2.58	3.46	4.33	2.44	3.31	3.33	NA	1.44	0.44	5/16-18 UNC
4 (8)	5.00	2.00	2.00	2.88	3.75	4.63	2.75	3.62	3.63	NA	1.81	0.50	7/16-14 UNC

Standard Series SSD, SSR, SSX, SWD, STD Basic Dimensions

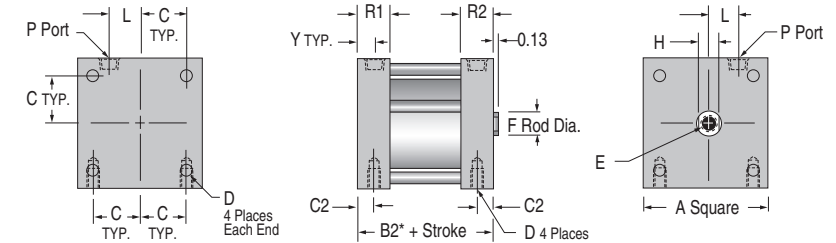
Model SSR Single Acting, Spring Retract

Bore Sizes
3/4", 1-1/16",
1-1/2", 2"



*Note: Some options effect cylinder length. See table on page 4 for spring forces.

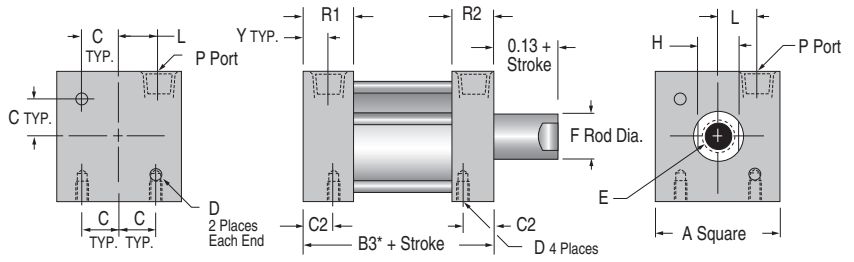
Bore Sizes
2-1/2", 3", 4"



Standard Strokes – All Models*: • 1/8 • 1/4 • 3/8 • 1/2 • 5/8 • 3/4 • 7/8 • 1 • 1-1/4 • 1-1/2 • 1-3/4 • 2 • 2-1/2 • 3 • 3-1/2 • 4
(*Note For SSX Models: 3" stroke max on 2" to 4" bores) Special strokes available on request. Contact Engineering or your local Fabco-Air Distributor

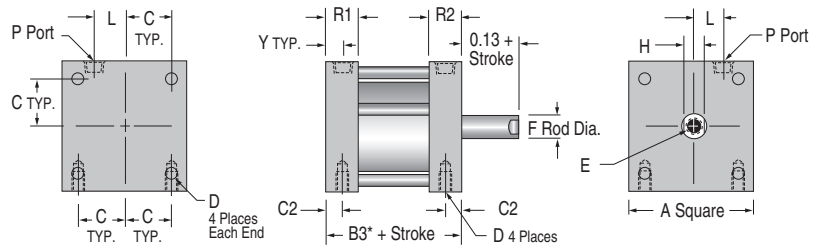
Model SSX Single Acting, Spring Extend

Bore Sizes
3/4", 1-1/16",
1-1/2", 2"



*Note: Some options effect cylinder length. See table on page 4 for spring forces.

Bore Sizes
2-1/2", 3", 4"



Approximate Cylinder Weights (ounces) SSD, SSR, SWD, STD, SSX

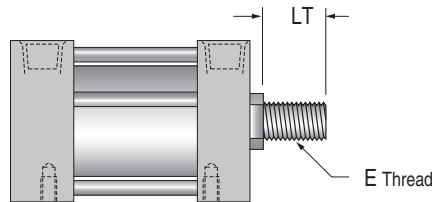
Bore	SSD, SSR		SWD, STD		SSX		
	Base	Adder per 1/8 of Stroke	Base	Adder per 1/8 of Stroke Model SWD	Adder per 1/8 of Stroke for Model STD	Base	Adder per 1/8 of Stroke
3/4 (2)	2.11	.08	2.50	.18	.13	2.11	.08
1-1/16 (3)	4.89	.24	5.47	.37	.25	5.28	.24
1-1/2 (4)	9.70	.32	10.08	.55	.42	9.98	.32
2 (5)	13.63	.40	15.36	.64	.50	14.40	.40
2-1/2 (6)	27.46	.48	32.83	.74	.59	29.95	.48
3 (7)	38.59	.64	47.33	1.01	.76	42.05	.64
4 (8)	68.74	.80	84.19	1.20	.92	74.59	.80

Dimensions (inches)

Bore	E Standard	E Coarse	E Depth for stroke range		F	H	L	P Port	R1	R2	Y
			1/8 - 1/2	5/8+							
3/4 (2)	#10-32 UNF	#10-24 UNC	0.30 - 0.46	0.46	0.31	0.25	0.30	#10-32	0.42	0.42	0.14
1-1/16 (3)	5/16-24 UNF	5/16-18 UNC	0.37 - 0.63	0.70	0.50	0.44	0.50	1/8 NPT	0.50	0.58	0.25
1-1/2 (4)	3/8-24 UNF	3/8-16 UNC	0.37 - 0.70	0.70	0.63	0.50	0.73	1/8 NPT	0.50	0.58	0.25
2 (5)	1/2-20 UNF	1/2-13 UNC	0.30 - 0.63	0.70	0.75	0.63	0.77	1/8 NPT	0.63	0.63	0.25
2-1/2 (6)	1/2-20 UNF	1/2-13 UNC	0.42 - 0.70	0.70	0.75	0.63	0.75	1/4 NPT	0.84	0.84	0.31
3 (7)	5/8-18 UNF	5/8-11 UNC	0.45 - 0.73	0.73	0.88	0.75	0.88	1/4 NPT	0.88	0.88	0.31
4 (8)	3/4-16 UNF	3/4-10 UNC	0.40 - 0.70	0.80	1.00	0.88	1.25	3/8 NPT	1.00	1.00	0.44

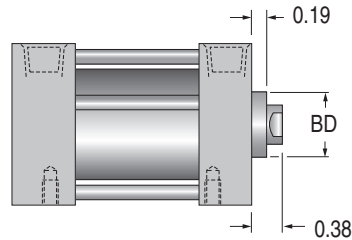
Model Options

Male Rod Ends (Option TCM or TFM)



Thread Sizes			
Bore	E Thread		LT
	TCM (Coarse)	TFM (Fine)	
3/4 (2)	#10-24 UNC	#10-32 UNF	0.38
1-1/16 (3)	5/16-18 UNC	5/16-24 UNF	0.50
1-1/2 (4)	3/8-16 UNC	3/8-24 UNF	0.50
2 (5)	1/2-13 UNC	1/2-20 UNF	0.63
2-1/2 (6)	1/2-13 UNC	1/2-20 UNF	0.63
3 (7)	5/8-11 UNC	5/8-18 UNF	0.75
4 (8)	3/4-10 UNC	3/4-16 UNF	0.75

Rod Wiper (Option W) Buna-N only



Boss Dia.	
Bore	BD
3/4 (2)	0.69
1-1/16 (3)	0.88
1-1/2 (4)	1.00
2 (5)	1.13
2-1/2 (6)	1.13
3 (7)	1.25
4 (8)	1.38

Deviations from Standard Dimensions (Options L, E)

^{FE} A minimum stroke of 3/8" is required to sense end-of-stroke positions.

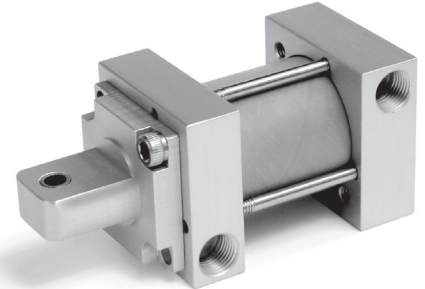
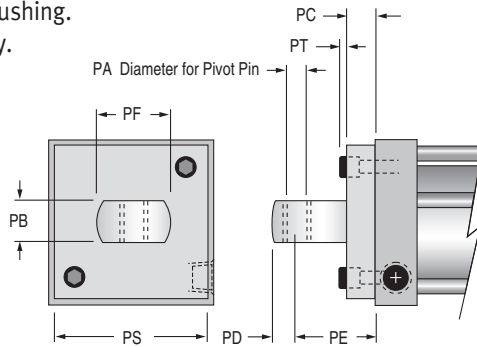
Length Adder (inches)		
Bore	Low Friction Seals	Magnetic Position Sensing ^{FE} with and without Low Friction Seals
	L	E or EL
3/4 (2)	0.25	0.75
1-1/16 (3)	0.38	0.50
1-1/2 (4)	0.38	0.63
2 (5)	0.38	0.63
2-1/2 (6)	0.38	0.88
3 (7)	0.50	0.88
4 (8)	0.50	0.88

Mounting Options

PM Pivot Mount -

Pin 90° from Port

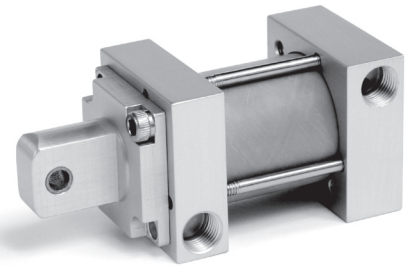
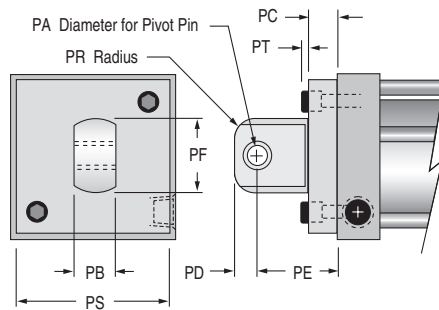
Complete with bronze pivot bushing.
Also available as an accessory.
See page 14.



SM Pivot Mount -

Pin in line with Port

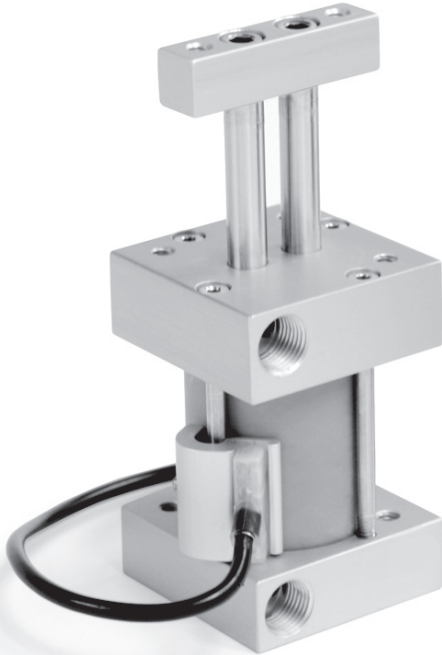
Complete with bronze pivot bushing.
Also available as an accessory.
See page 14.



Dimensions (inches)

Bore	PA	PB	PC	PD	PE	PF	PR	PS	PT
3/4 (2)	0.19	0.38	0.19	0.25	0.75	0.75	0.19	1.13	0.02
1-1/16 (3)	0.19	0.38	0.25	0.25	0.81	0.75	0.19	1.25	0.02
1-1/2 (4)	0.38	0.75	0.25	0.44	1.19	1.38	0.38	1.75	0.03
2 (5)	0.38	0.75	0.31	0.44	1.38	1.38	0.38	2.25	0.08
2-1/2 (6)	0.38	0.75	0.38	0.44	1.31	1.38	0.38	3.00	0.05
3 (7)	0.63	1.00	0.38	0.56	1.69	1.88	0.38	3.50	0.05
4 (8)	0.63	1.00	0.44	0.56	1.75	1.88	0.38	4.50	0.12

Square Pancake® II Cylinders



Nonrotating, double acting 4 Bore sizes 3/4" thru 2" Strokes to 4" standard

Twin piston rods are incorporated into the cylinder head to achieve NON-ROTATION. The rods are securely fastened to the piston and tied together externally by a rod end tool bar. The tool bar insures that the rods move in tandem and provides an ideal mounting surface for any attachments required by your application. The tool bar is furnished with threaded mounting holes or optional counter-bored mounting holes.

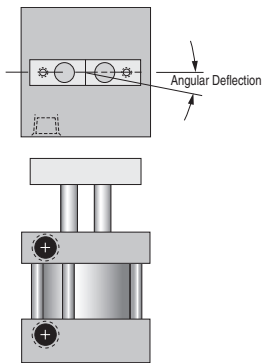
End face and bottom surface tapped mounting holes allow accurate and convenient vertical, horizontal and parallel alignment.

Ratings – Standard Units all Series

- Body High strength aluminum alloy
- Heads Clear anodized aluminum alloy
- Tie Bolts Stainless steel
- Rod Chrome plated stainless steel
- Piston Stainless steel
- Rod end Tool bar
- Ports Position #1
- Seals Internally lubricated Buna-N
- Lubrication Magnalube®-G
- Rod bushing Bronze
- Stroke tolerance ± 1/64"
- Media Air
- Pressure rating, maximum 200 psi
- Minimum recommended operating pressure 15 psi
- Temperature rating Cylinder -25° to +221°F (-32° to +105°C)
- Temperature rating Electronic sensors -4° to +176°F (-20° to +80°C)

Allowable Torsion Load and Rotational Tolerance

Side loading should be avoided for any cylinder application. The smaller diameter twin rods will have more deflection due to side load than the one standard rod in a comparable Square Pancake® II cylinder. However, the SND Series is designed to work satisfactorily against pure torsional loads. Maximum torsional load per bore size is shown in the following table.



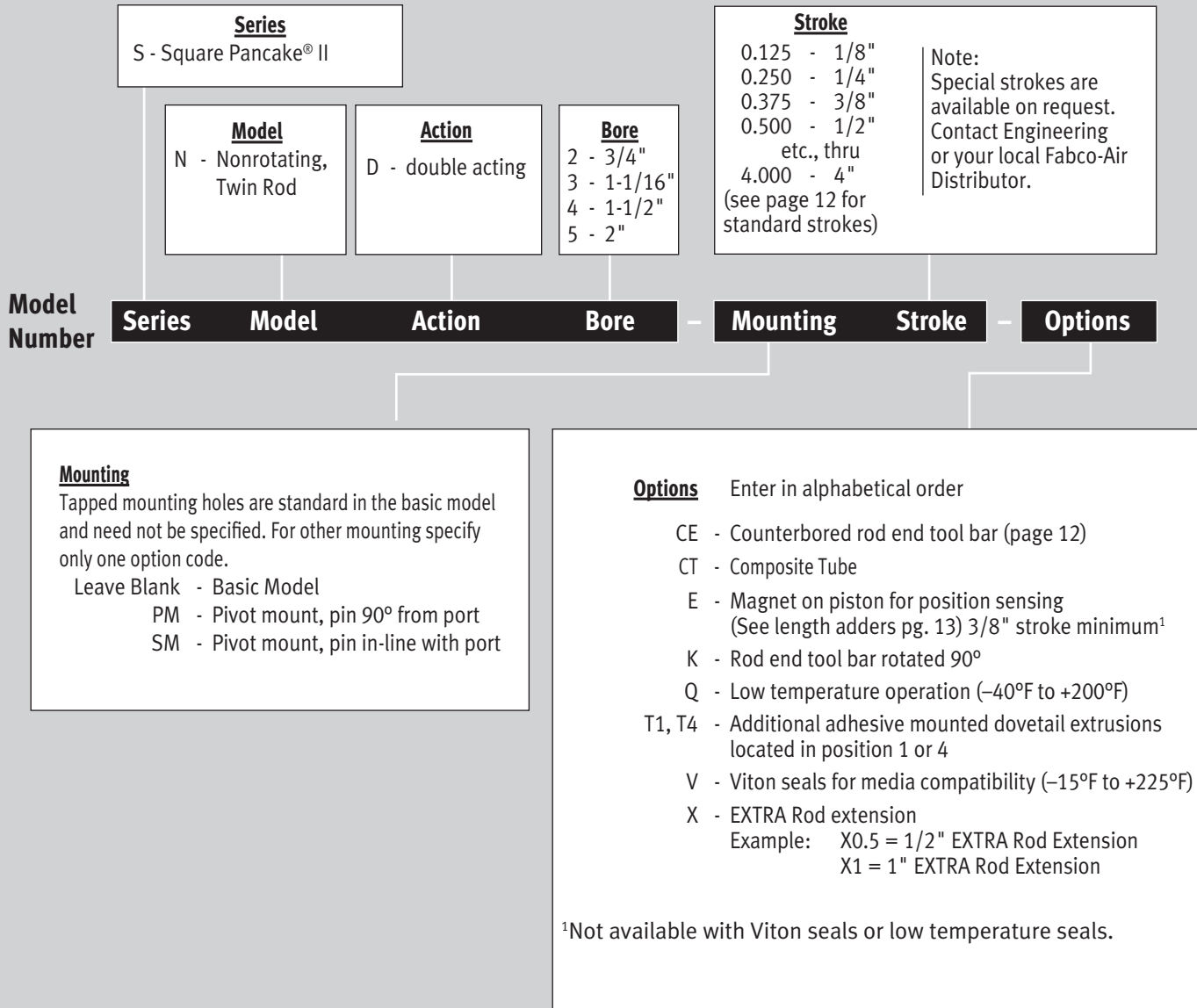
Approximate Angular Deflection (Degrees) due to max. torsional load							
Bore	Torsional Load Max.	Stroke					
		0 to 1-1/2	2	2-1/2	3	3-1/2	4
3/4	0.3 in-lbs	less than 0.22	0.51	0.98	1.67	2.62	3.88
1-1/16	1.0 in-lbs	less than 0.15	0.33	0.64	1.09	1.71	2.53
1-1/2	5.0 in-lbs	less than 0.08	0.18	0.36	0.61	0.95	1.41
2	10.0 in-lbs	less than 0.03	0.07	0.13	0.22	0.34	0.50

Freeplay Rotational Tolerance				
Bore	3/4" (2)	1-1/16" (3)	1-1/2" (4)	2" (5)
Max. Rotation	±1°	±3/4°	±1/2°	±1/2°

Cylinder Sizing Guide

Bore Diameter (inch)	3/4	1-1/16	1-1/2	2
Rod Diameter (inch)	0.19	0.25	0.38	0.50
Rod Area (inch)	0.05	0.10	0.22	0.38
Push Area (inch)	0.44	0.88	1.76	3.14
Pull Area (inch)	0.39	0.78	1.54	2.76

How to Order



How to Order

1. Specify S, Model, Action and Bore
2. Specify optional Mounting (if required), then Stroke
3. Specify the Options in alphabetical order

Ordering example #1: SND3-PM0.375-V

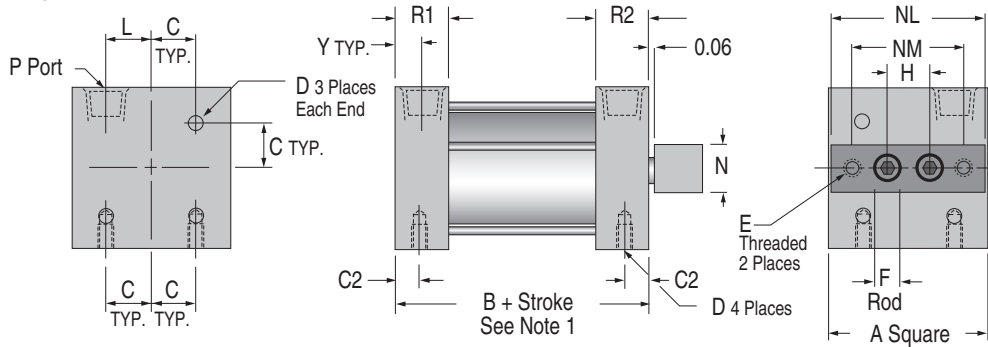
This model number specifies a Square® Pancake II nonrotating, double acting, cylinder with tool bar, 1-1/16" bore, pivot mounting, 3/8" stroke and Viton seals.

Ordering example #2: SND5-2.000

This model number specifies a Square® Pancake II nonrotating, double acting, cylinder with tool bar, 2" bore, standard tapped mounting holes, and 2" stroke.

Basic Model SND

Twin Rod, Nonrotating Double Acting

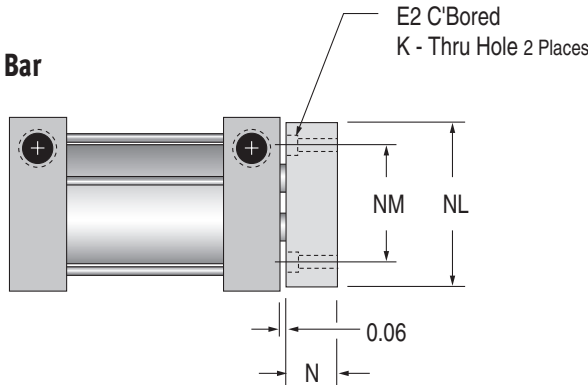


Note 1: Magnetic Position Sensing Length Adders see page 13.
 A minimum stroke of 3/8" is required to sense end-of-stroke positions

Standard Strokes – All Models: • 1/8 • 1/4 • 3/8 • 1/2 • 5/8 • 3/4 • 7/8 • 1 • 1-1/4 • 1-1/2 • 1-3/4 • 2 • 2-1/2 • 3 • 3-1/2 • 4
 Special strokes available. Contact Engineering or your local Fabco-Air distributor for information.

Model Options

Option CE Counterbored Rod End Tool Bar



C'Bore Hole Dimensions (inches)			
Bore	E2 C'Bore	K	For SHCS
3/4 (2)	0.24 x 0.15 dp	0.15	#6
1-1/16 (3)	0.29 x 0.18 dp	0.18	#8
1-1/2 (4)	0.40 x 0.27 dp	0.26	1/4
2 (5)	0.49 x 0.33 dp	0.33	5/16

Approximate Cylinder Weights (ounces)		
Bore	Base	Adder per 1/8 of Stroke
3/4 (2)	3.39	0.1
1-1/16 (3)	7.59	0.5
1-1/2 (4)	14.78	0.7
2 (5)	22.65	0.9

Dimensions (inches)								
Bore	A	B	C	C2	D	E Thread	F	H
3/4 (2)	1.25	0.75	0.38	0.28	#6-32 UNC	#6-32 UNC	0.19	0.332
1-1/16 (3)	1.50	1.25	0.50	0.38	#8-32 UNC	#8-32 UNC	0.25	0.422
1-1/2 (4)	2.00	1.25	0.69	0.31	#10-24 UNC	1/4-20 UNC	0.38	0.562
2 (5)	2.50	1.31	0.88	0.38	1/4-20 UNC	5/16-18 UNC	0.50	0.750

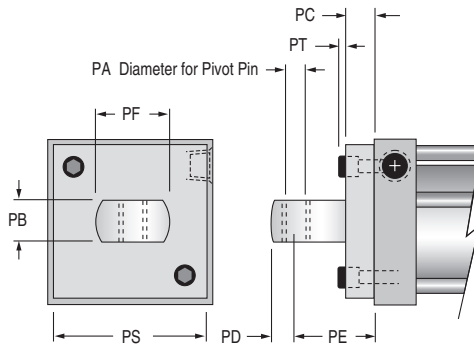
Bore	L	N	NL	NM	P	R1	R2	Y
3/4 (2)	0.35	0.38	1.25	0.88	#10-32 UNF	0.42	0.42	0.14
1-1/16 (3)	0.45	0.38	1.44	1.06	1/8 NPT	0.50	0.58	0.25
1-1/2 (4)	0.60	0.50	2.00	1.50	1/8 NPT	0.50	0.58	0.25
2 (5)	0.76	0.63	2.50	1.88	1/8 NPT	0.63	0.63	0.25

Mounting Options

PM Pivot Mount -

Pin 90° from Port

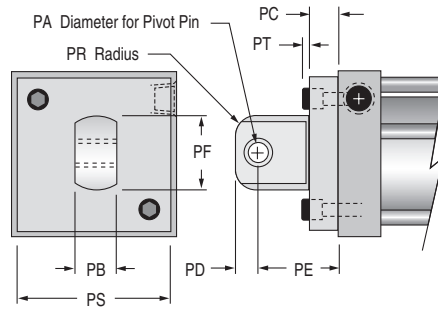
Complete with bronze pivot bushing.
Also available as an accessory.
See page 14.



SM Pivot Mount -

Pin in line with Port

Complete with bronze pivot bushing.
Also available as an accessory.
See page 14.



Dimensions (inches)

Bore	PA	PB	PC	PD	PE	PF	PR	PS	PT
3/4 (2)	0.19	0.38	0.19	0.25	0.75	0.75	0.19	1.13	0.02
1-1/16 (3)	0.19	0.38	0.25	0.25	0.81	0.75	0.19	1.25	0.02
1-1/2 (4)	0.38	0.75	0.25	0.44	1.19	1.38	0.38	1.75	0.03
2 (5)	0.38	0.75	0.31	0.44	1.38	1.38	0.38	2.25	0.08

Deviations from Standard Dimensions (Option E)

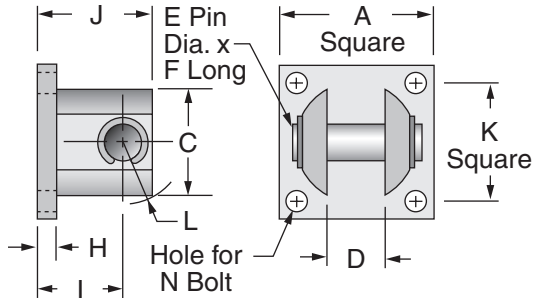
^{FE} A minimum stroke of 3/8" is required to sense end-of-stroke positions.

Length Adder (inches)

Bore	Magnetic Position Sensing ^{FE}
	E
3/4 (2)	0.75
1-1/16 (3)	0.50
1-1/2 (4)	0.63
2 (5)	0.63

Clevis Bracket

Anodized aluminum alloy
Chrome plated steel pin included



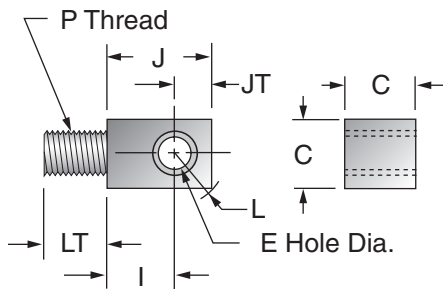
The bracket is intended for mounting with either a rod eye or pivot mount; it is not intended to mount directly with the rear cylinder head.

Dimensions (inches)

Kit No.	Bore	A	C	D	E	F	H	I	J	K	L	N
CB-3	3/4 (2)	1.00	0.71	0.39	0.187	0.93	0.16	0.56	0.78	0.75	0.42	#6
	1-1/16 (3)											
CB-6	1-1/2 (4)											
	2 (5)	1.75	1.37	0.75	0.375	1.63	0.22	0.94	1.34	1.38	0.80	#10
	2-1/2 (6)											
CB-8	3 (7)	2.50	2.10	1.00	0.625	2.42	0.25	1.25	1.81	2.00	1.19	1/4
	4 (8)											

Rod Eye

Steel with bronze pivot bushing and nut

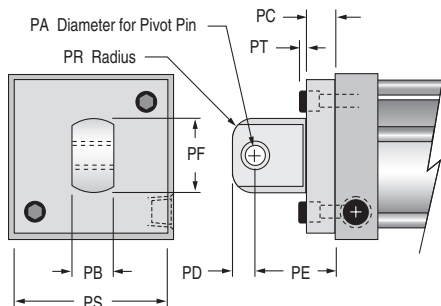


Dimensions (inches)

Kit No.	Bore	C	E	I	J	JT	L	LT	P
RE-2	3/4 (2)	0.38	0.187	0.47	0.72	0.25	0.32	0.38	#10-32 UNF
RE-3	1-1/16 (3)	0.38	0.187	0.47	0.72	0.25	0.32	0.63	5/16-24 UNF
RE-4	1-1/2 (4)	0.75	0.375	0.72	1.16	0.44	0.58	0.63	3/8-24 UNF
RE-6	2 (5)	0.75	0.375	0.72	1.16	0.44	0.58	0.75	1/2-20 UNF
	2-1/2 (6)								
RE-7	3 (7)	1.00	0.625	1.00	1.63	0.63	0.80	0.88	5/8-18 UNF
RE-8	4 (8)	1.00	0.625	1.00	1.63	0.63	0.80	0.88	3/4-16 UNF

Pivot Mount Attachment with Mounting Screws

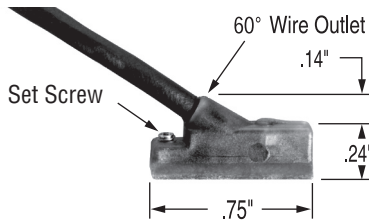
Anodized Aluminum Alloy



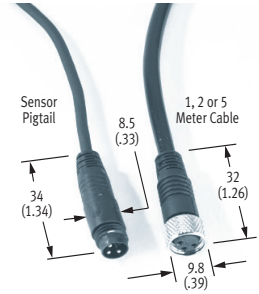
Dimensions (inches)

Kit No.	Bore	PA	PB	PC	PD	PE	PF	PR	PS	PT
PA-2	3/4 (2)	0.19	0.38	0.19	0.25	0.75	0.75	0.19	1.13	0.02
PA-3	1-1/16 (3)	0.19	0.38	0.25	0.25	0.81	0.75	0.19	1.25	0.02
PA-4	1-1/2 (4)	0.38	0.75	0.25	0.44	1.19	1.38	0.38	1.75	0.03
PA-5	2 (5)	0.38	0.75	0.31	0.44	1.38	1.38	0.38	2.25	0.08
PA-6	2-1/2 (6)	0.38	0.75	0.38	0.44	1.31	1.38	0.38	3.00	0.05
PA-7	3 (7)	0.63	1.00	0.38	0.56	1.69	1.88	0.38	3.50	0.05
PA-8	4 (8)	0.63	1.00	0.44	0.56	1.75	1.88	0.38	4.50	0.12

Sensor Specifications & Ordering Information

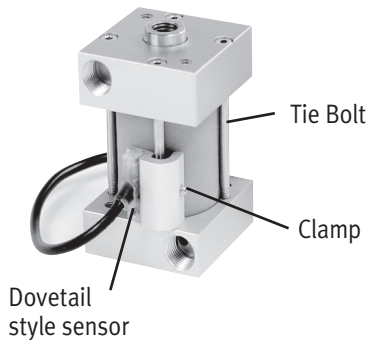


- Encased in a plastic housing, dovetail style electronic sensors are corrosion resistant. 60° wire outlet allows close mounting.
- Method of mounting:
Tie bolt spacer mounted clamps (Option -E)
- Order sensors separately from the table below



Ordering Guide – Dovetail Style Magnetic Sensor with LED				Sensor Temperature Range -20° to +80° C (-4° to +176° F)	Female Cordsets for Quick Disconnect								
Sensor Type	Prewired 9 ft. Part No.	Quick Disconnect Part No.*	Wire Leads	Electrical Characteristics									
Electronic	949-000-031	949-000-331	3	Sourcing PNP 6-24 VDC, 0.20 Amp Max current, 0.5 Voltage Drop	<table border="1"> <thead> <tr> <th>Length</th> <th>Part No.</th> </tr> </thead> <tbody> <tr> <td>1 Meter</td> <td>CFC-1M</td> </tr> <tr> <td>2 Meters</td> <td>CFC-2M</td> </tr> <tr> <td>5 Meters</td> <td>CFC-5M</td> </tr> </tbody> </table>	Length	Part No.	1 Meter	CFC-1M	2 Meters	CFC-2M	5 Meters	CFC-5M
Length	Part No.												
1 Meter	CFC-1M												
2 Meters	CFC-2M												
5 Meters	CFC-5M												
Electronic	949-000-032	949-000-332	3	Sinking NPN 6-24 VDC, 0.20 Amp Max current, 0.5 Voltage Drop									
Note*: Quick disconnect styles are supplied with 6 inch pigtail with male connector. Order female cordsets separately.													

Option -E Magnet on piston – use tie bolt mounted clamps



Order clamps and sensors separately

To apply dovetail style sensors first locate clamp in rough position on any of the tie bolts and lock it in place with the set screw.

Next, make fine adjustment by sliding the sensor within the clamp and lock in place with its set screw.

Clamp Selection Guide			
Kit No.	900-F00-000	900-G00-000	900-H00-000
To Fit Bore	3/4, 1-1/16, 1-1/2, 2	2-1/2, 3	4

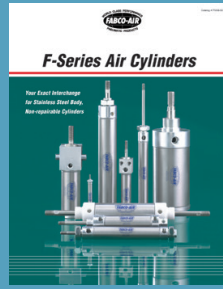


FABCO-AIR, Inc. • 3716 N.E. 49th Avenue • Gainesville, FL 32609 • Tel (352) 373-3578
 • Fax (352) 375-8024 • E-Mail: service@fabco-air.com • Web Site: www.fabco-air.com

Fabco-Air Product Catalog Library



NFPA Interchangeable Air Cylinders - Catalog # NF-6



F-Series Round Body Cylinders Catalog SSB-03



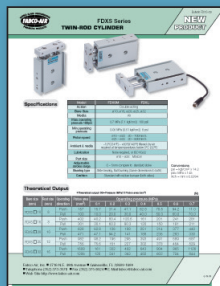
Pancake® II Air Cylinders Catalog # Pan2 -2



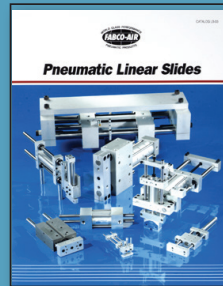
H-Series Round Body Cylinders Catalog # HKC-16



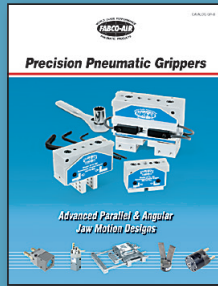
OEM - NFPA Air Cylinders Catalog # FFCQN-OEM



Twin Rod, Non-Rotating Air Cylinders - Catalog # FDF-09 and Catalog # FDXS-09



Linear Slides - 6 Families Catalog # LS-03



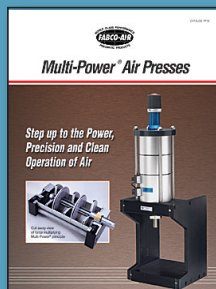
Pneumatic Grippers, Parallel Jaw and Angular Motion - Catalog # GR-8



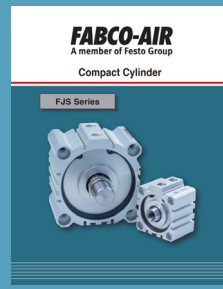
Pneumatic Angular Grippers Catalog # FKA-09



ISO 6432 Cylinders Catalog # FAE-09



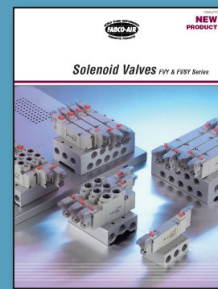
Multi-Power® Air Presses Catalog # FP16



FJS Series Compact Cylinder



Swing Clamps Bulletin # SC-DB04



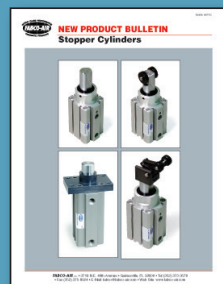
Manifold Solenoid Valves Catalog # FVS.Y-09



ISO 6431 Cylinders Catalog # FAQR-09



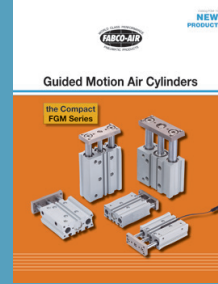
Modular Air Preparation System - FRLs Catalog # FRL-06



Stopper Cylinders Catalog # ST-SC



Swing Clamps, Pneumatic & Hydraulic Catalog # FML.H



Guided Motion Air Cylinders Catalog # FGM-10



Air Slide Tables Catalog # FGXS-10