

## FABCO-AIR Product Brochure



## Round Body



The Roundbody F-Series Cylinder are thin wall stainless steel bodies with crimped aluminum end caps. Used in general purpose automation. Made in USA

- 12 bore sizes: 5/16 through 3 inches
- Stroke lengths up to 32 inches
- Available with Air Cushions/Bumpers
- Pressure rated to 250 PSIG pneumatic service
- Many standard options and accessories
- Flexible specials to meet specific application requirements
- Typical lead time 3-5 days

303 Stainless, Roller Burnished Rod Standard.

304 Stainless Steel barrel.



Roll-formed rod threads.

Oil impregnated sintered bronze bushing.

Internally Lubricated, Buna-N Seals.



Magnetic piston option for position sensing.

High strength adhesive mates piston to rod.

### Drop in Interchange to:

BIMBA	Original Line
SMC	NCM
Parker	SR
Numatics	M-Series
Norgren	Roundline
etc...	

## Pancake/Pancake II Cylinders



The Original Pancake Cylinder was invented in 1958 to meet market requirements for a compact, short stroke actuator. These cylinders are machined from high quality, solid aluminum bar stock with a clear anodized finish for corrosion resistance.

Though many competitors released their versions of the pancake style actuator, the Original Pancake is still the bar in which all others are measured. It has few direct interchanges.

- 8 bore sizes: 1/2" to 4"
- Standard stroke lengths up to 4"
- Many standard options and accessories
- Flexible specials to meet specific application requirements
- Typical lead time 3-5 days

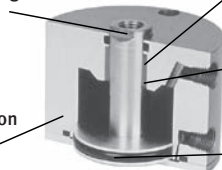
Hard Chrome plated SS piston rod provides long life and corrosion resistance.

Composite rod bushing for greater support.

Lubed for Life with Magnalube-G®.

Heavy wall Construction provides structural rigidity.

Magnetic piston option for position sensing.



The Pancake II Cylinder was designed to provide a drop in interchange for competitor's products.

- 8 bore sizes: 1/2" to 4"
- Stroke lengths up to 4" (longer strokes upon request)
- Temp ratings -25° to +225° F (-32° to +121° C)
- Air service from -15PSI up to 200 PSI
- Many standard options and accessories
- Flexible specials to meet specific application requirements
- Typical lead time 3-5 days

### Drop in Interchange to:

BIMBA	Flat-1
SMC	(N)CQ8
Parker	LP
Numatics	NB-Series
Norgren	F-Series Plus
etc...	

Hard Chrome plated 304 SS piston rod provides long life and corrosion resistance.

Captive rod bearing and seal prevents migration & failure.

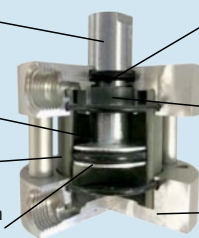
Lubed for Life with Magnalube-G®.

Duralon® rod bearing enables long life & greater side loads.

Self-lubricating composite body.

Magnetic piston option for position sensing.

Robust end cap prevents failures under high load/cycle rates.



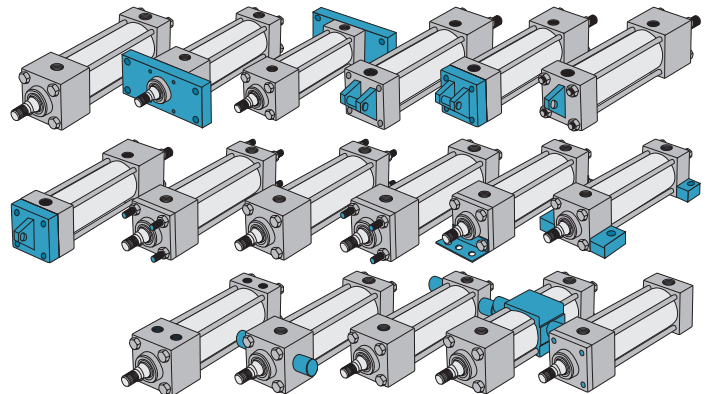
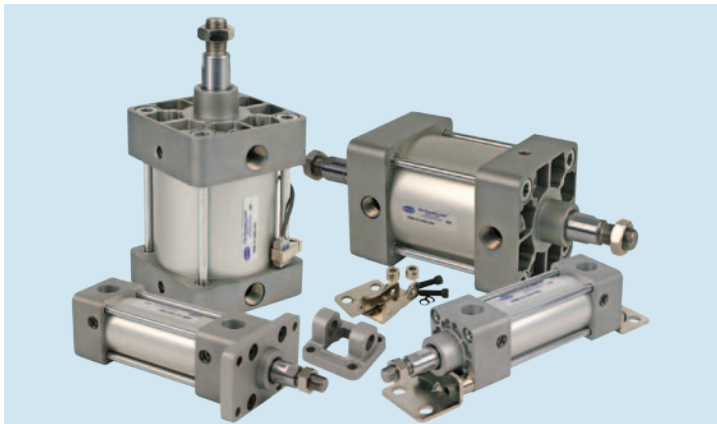
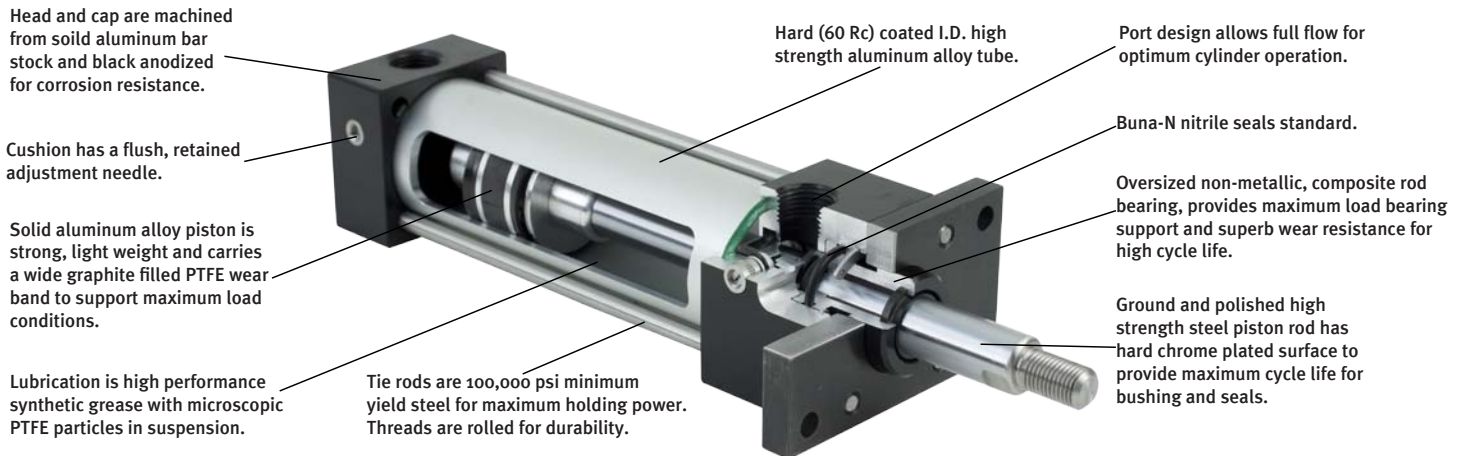
## Machined NFPA/OEM NFPA Actuators

### Full range, machined head, NFPA Actuators

- Available in 7 bore sizes ranging from 1-1/2" to 6" (up to 14" bore upon request)
- Stroke lengths up to 99"
- Many standard options and accessories
  - Oversized rod, double rod, etc
  - Rotated port positions
- Flexible specials to meet specific application requirements
- Typical lead time 3-5 days

### Drop in Interchange to:

BIMBA	TA Series
SMC	NCA1
Parker	2/3/4MA
Numatics	A-Series
Norgren	A-Series
etc...	

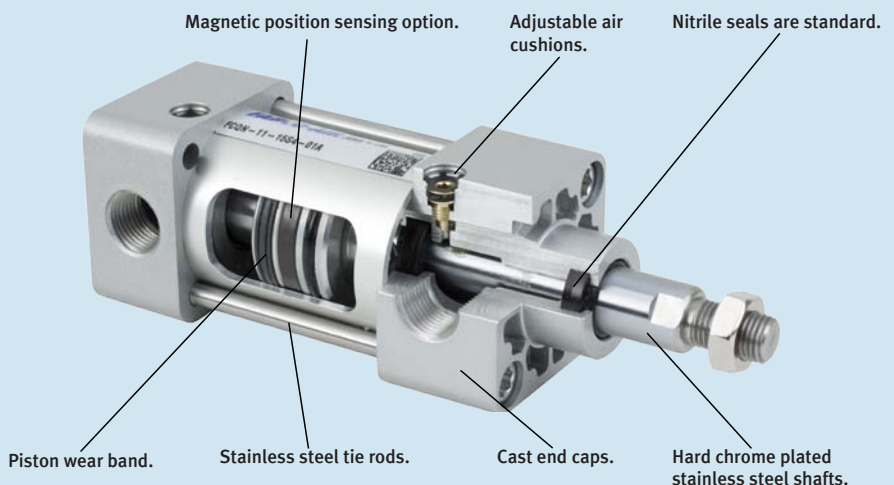


The OEM NFPA is a cost effective alternative to the machined NFPA.

- 5 bore sizes: 1-1/2" through 4"
- Stroke lengths up to 48" standard
- Viton option for high temperature operation
- Many standard options and accessories
- Low cost, economical
- Typical lead time 3-5 days

### Drop in Interchange to:

BIMBA	TA Series
SMC	NCA1
Parker	2/3/4MA
Numatics	A-Series
Norgren	A-Series
etc...	





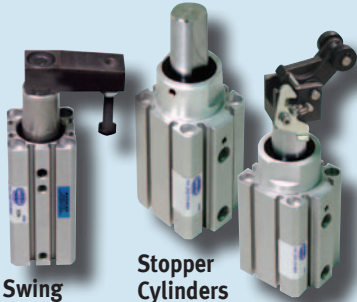
# Over 60 Years Advancing Pneumatics Technology



**Interchangeable  
Round Body Cylinders**  
• 12 Bores 5/16" to 3"  
• Strokes to 32"



**Linear Slides**



**Swing  
Clamps**

**Stopper  
Cylinders**



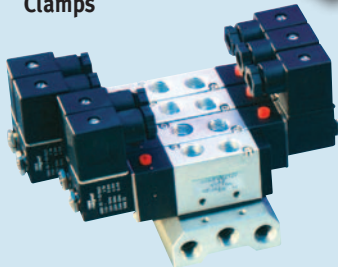
**Modular  
Air Preparation  
Systems**



**Interchangeable  
Metric Cylinders**  
• 10 bores 12-100mm.  
• Strokes 5-150mm



**Multi-Power®  
Air Presses**



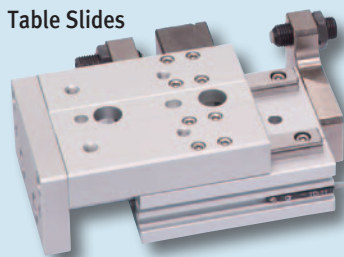
**Solenoid  
Valves**



**Air Pilot  
Valves**



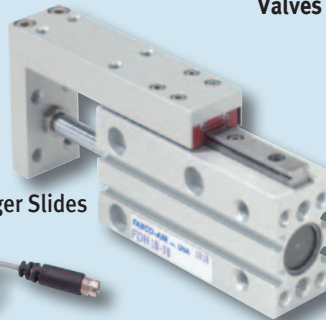
**Mechanical  
Valves**



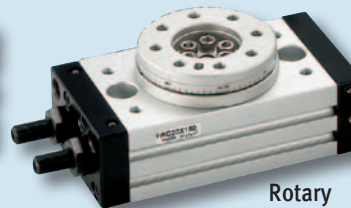
**Table Slides**



**Finger Slides**



**Popular Short Stroke Air Cylinders  
are Directly Interchangeable**  
• 8 Bores 1/2" to 4"  
• Strokes 1/16" to 4"



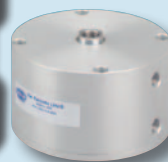
**Rotary  
Actuators**



**Pancake® II**



**The Original Pancake®**



**Square Pancake® II**



**Wide Opening Grippers**

**FABCO-AIR**  
A member of Festo Group