

FABCO-AIR

Pneumatic & Hydraulic Swing Clamps

FML & FHL Series









Specifications 100 psi max.

How to Order

Series	FML	FMLD	FMLT	FMLDT
Action type	Single side	Double sides	Thread body & Single side	Thread body & Double sides
Bore size (mm)	ø25, ø32, ø40, ø50, ø63			
Operating media	Compressed air			
Min. operating pressure	0.3Mpa(3kgf/cm ²) 43psi			
Max. operating pressure	0.7Mpa(7kgf/cm ²)100psi			
Temperature range	0°C(32°F) ~ + 80°C(176°F)			
Swing angle	90° ± 2°			
Rotation direction	L= counter-clockwise; R = clockwise			
Lubrication	None required or use ISO VG32			
Stroke action	See page 4			

FML

Series

FML Single side	FMLD Double sides
	
ø25 not available	
FMLT Thread body & Single side	FMLDT Thread body & Double sides
	
ø63 not available	

25 X 90

Bore

ø25
ø32
ø40
ø50
ø63

R

Swivel Angle

90°

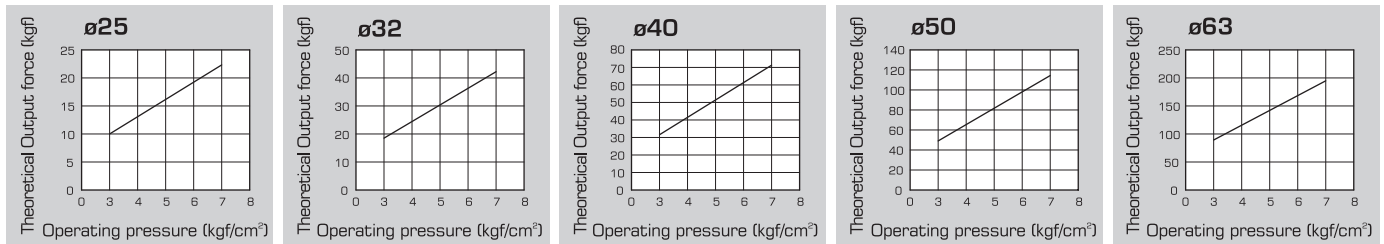
Rotating* direction

R	clockwise
L	counter clockwise

*During the retract stroke

See prices on page 3

Theoretical Output



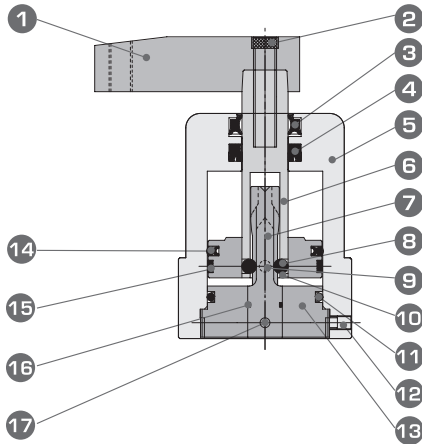
Bore	Piston rod	Effective area (in ²)	Theoretical retract force (lbf)				
			43 psi	57 psi	71 psi	85 psi	100 psi
ø25	ø14	0.52	22.5	30	37	45	52
ø32	ø16	0.93	39.6	53	66	79	92
ø40	ø16	1.63	69.4	92	115	139	162
ø50	ø20	2.56	109	145	182	218	254
ø63	ø20	4.34	185	247	308	370	432

FABCO-AIR PNEUMATIC SWING CLAMP CYLINDER

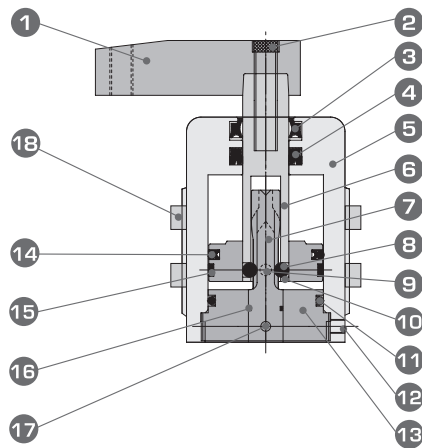
FML Series

Construction

FML Standard type



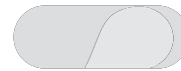
FMLT Threaded type



Parts List

Item	Part name	Material	Qty
1	Clamp arm	Carbon steel	1
2	SHCS	Carbon steel	1
3	Dust seal	NBR	1
4	Rod seal	NBR	1
5	Body	Hard anodized aluminum alloy	1
6	Rod	Hard chrome plate carbon steel	1
7	Pilot pin	Hard chrome plate carbon steel	1
8	Steel ball	Carbon steel	3
9	Retaining pin	Carbon steel	1
10	Holding ring	Carbon steel	1
11	Cover O-ring	NBR	1
12	SHCS	Carbon steel	2
13	Head cover	Carbon steel	1
14	Piston seal	NBR	1
15	Wear ring	PU	1
16	O-ring	NBR	1
17	Pilot pin	Carbon steel	1
18	Mounting nut	High strength steel	2

Price List

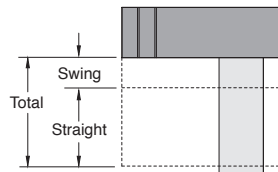


Bore	Complete Seal kits	Price
ø25	FML25-SK	-
ø32	FML32-SK	-
ø40	FML40-SK	-
ø50	FML50-SK	-
ø63	FML63-SK	-

Single Side	Price	Double Side	Price	Thread Body Single Side	Price	Thread Body Double Sides	Price
FML25x90R/L	-	-	-	FMLT25x90R/L	-	-	-
FML32x90R/L	-	FMLD32x90R/L	-	FMLT32x90R/L	-	FMLDT32x90R/L	-
FML40x90R/L	-	FMLD40x90R/L	-	FMLT40x90R/L	-	FMLDT40x90R/L	-
FML50x90R/L	-	FMLD50x90R/L	-	FMLT50x90R/L	-	FMLDT50x90R/L	-
FML63x90R/L	-	FMLD63x90R/L	-	-	-	-	-

Dimensions (mm)

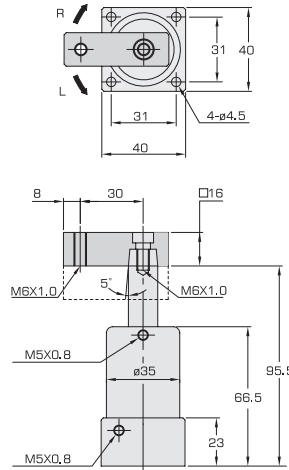
Stroke Action



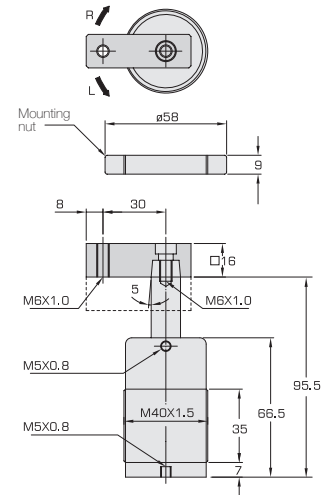
Stroke Action (mm) for FML Series

Bore	Swing	Straight	Total
ø25	12	14	26
ø32	12	14	26
ø40	12	15	27
ø50	14	15	29
ø63	14	15	29

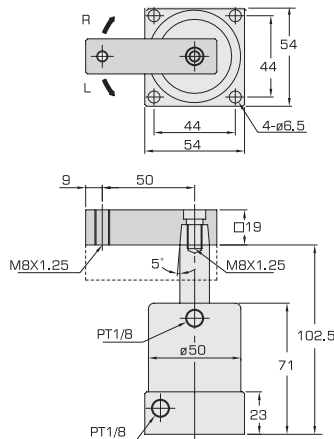
FML25



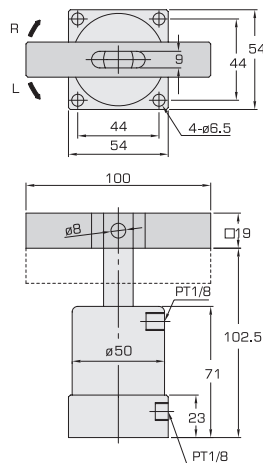
FMLT25



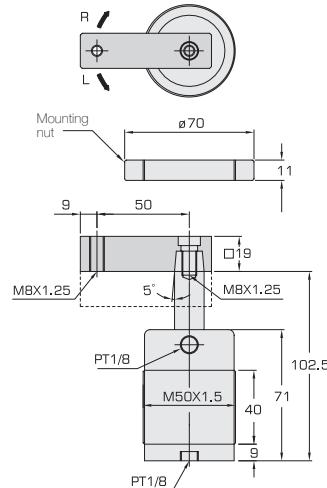
FML32



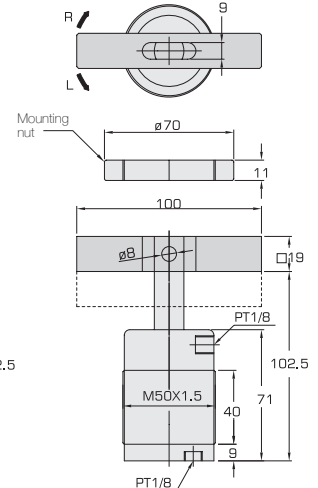
FMLD32



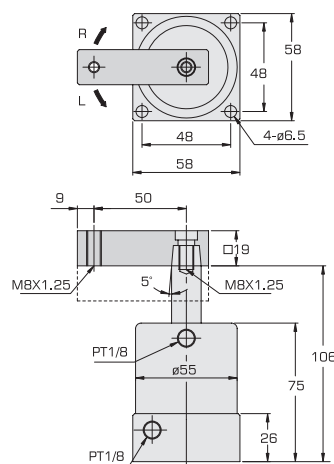
FMLT32



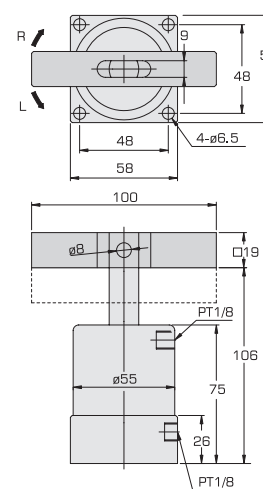
FMLDT32



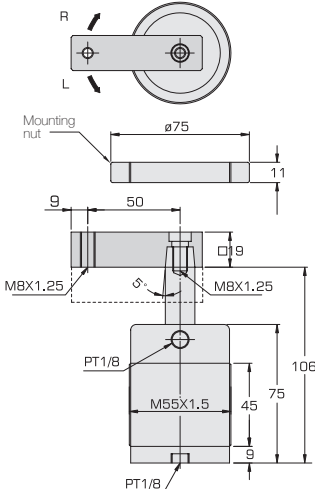
FML40



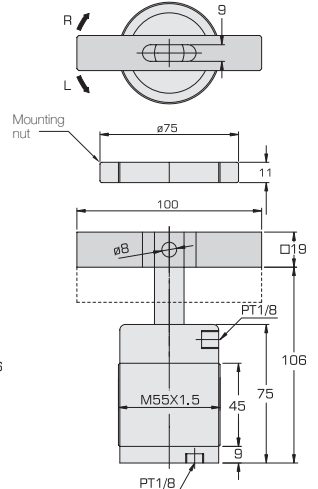
FMLD40



FMLT40

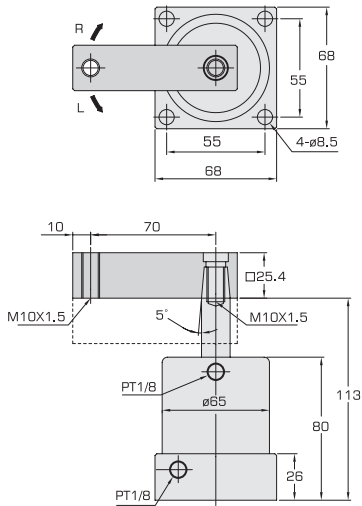


FMLDT40

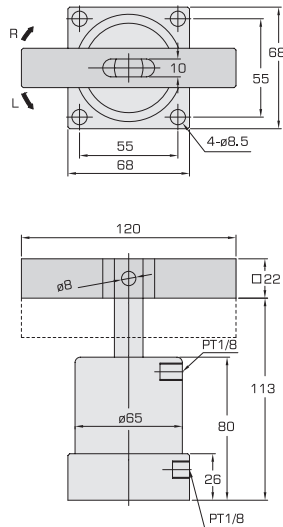


Dimensions (mm)

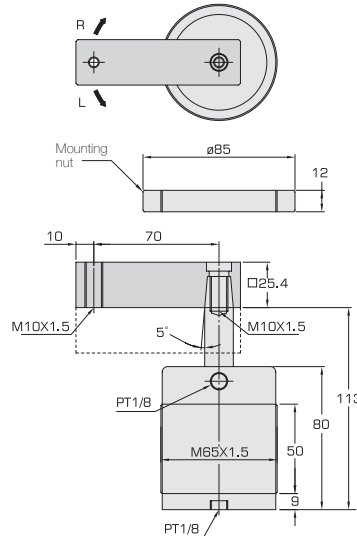
FML50



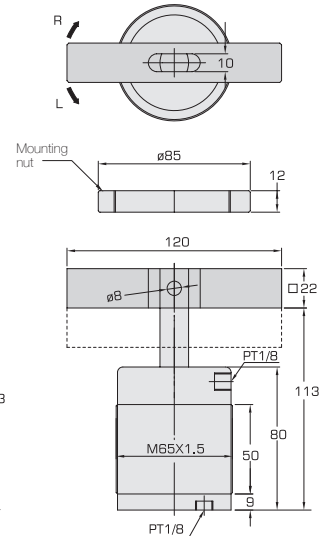
FMLD50



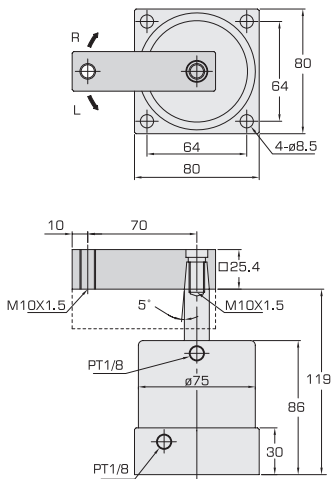
FMLT50



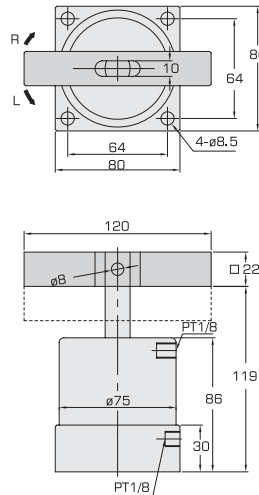
FMLDT50



FML63



FMLD63





Specifications 1000 psi max.

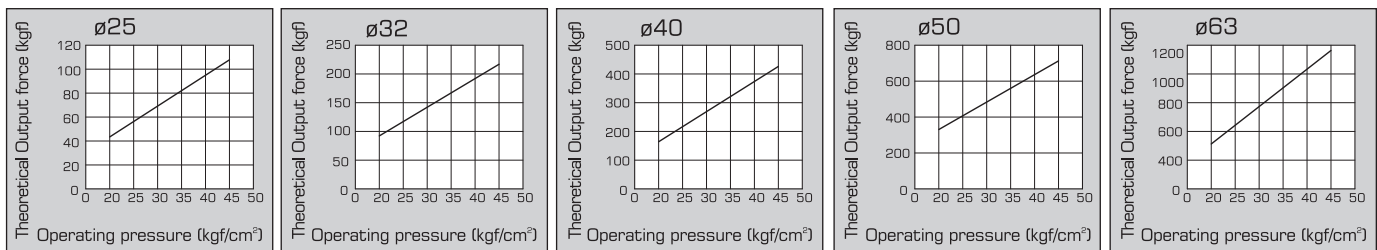
Series	FHL	FHLD	FHLT	FHLDT
Action type	Single side	Double sides	Thread body & Single side	Thread body & Double sides
Bore size (mm)	ø25, ø32, ø40, ø50, ø63			
Operating media	Petroleum based hydraulic fluid			
Min. operating pressure	2Mpa(20kgf/cm ²)285psi			
Max. operating pressure	7Mpa(70kgf/cm ²) 1000psi			
Temperature range	0°C(32°F) ~ + 80°C(176°F)			
Swing angle	90° ± 2°			
Rotation direction	L= counter-clockwise; R = clockwise			
Lubrication	None required			
Stroke action	See page 8			

How to order

FHL	25 X 90	R
Series	Bore	Swivel Angle
FHL Single side	ø25	90°
FHLD Double sides	ø32	R clockwise
	ø40	L counter clockwise
	ø50	*During the retract stroke
	ø63	
FHLT Thread body & Single side		
FHLDT Thread body & Double sides		
ø63 not available		
ø63 not available		

See prices on page 7

Theoretical Output



Bore Size (mm)	Piston rod	Effective area (in ²)	Theoretical retract force (lbf)										
			285 psi	355 psi	427 psi	498 psi	569 psi	640 psi	710 psi	782 psi	853 psi	924 psi	1000 psi
Ø25	ø18	0.37	105	132	158	185	211	236	263	289	315	342	370
Ø32	ø20	0.76	216	270	324	378	432	485	539	594	648	702	760
Ø40	ø20	1.46	414	518	621	725	828	932	1036	1141	1245	1349	1460
Ø50	ø20	2.56	727	909	1091	1273	1455	1636	1817	2001	2183	2365	2560
Ø63	ø25	4.07	1159	1449	1739	2029	2319	2609	2889	3182	3471	3760	4070



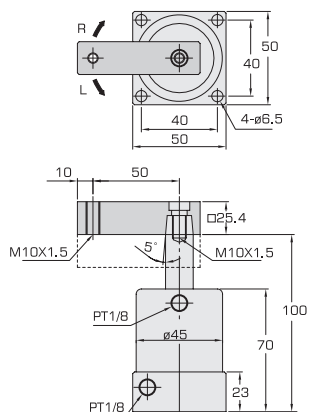
Bore	Complete Seal kits	Price
ø25	FHL25-SK	-
ø32	FHL32-SK	-
ø40	FHL40-SK	-
ø50	FHL50-SK	-
ø63	FHL63-SK	-

Price List

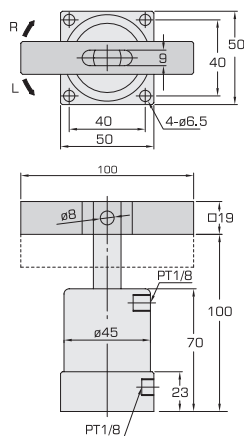
Single Side	Price	Double Sides	Price	Thread Body Single Side	Price	Thread Body Double Sides	Price
FHL25x90R/L	-	FHLD25x90R/L	-	FHLT25x90R/L	-	FHLDT25x90R/L	-
FHL32x90R/L	-	FHLD32x90R/L	-	FHLT32x90R/L	-	FHLDT32x90R/L	-
FHL40x90R/L	-	FHLD40x90R/L	-	FHLT40x90R/L	-	FHLDT40x90R/L	-
FHL50x90R/L	-	FHLD50x90R/L	-	FHLT50x90R/L	-	FHLDT50x90R/L	-
FHL63x90R/L	-	FHLD63x90R/L	-	-	-	-	-

Dimensions (mm)

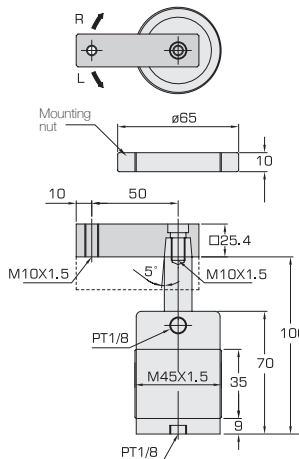
FHL25



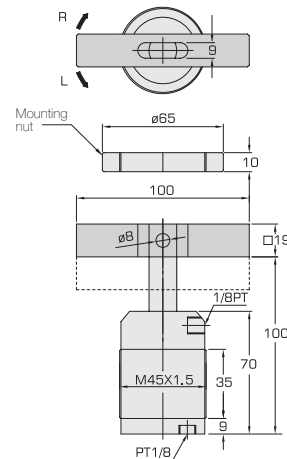
FHLD25



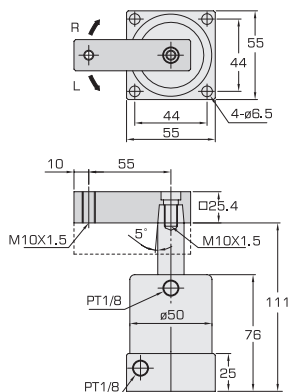
FHLT25



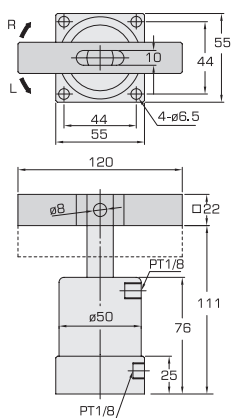
FHLDT25



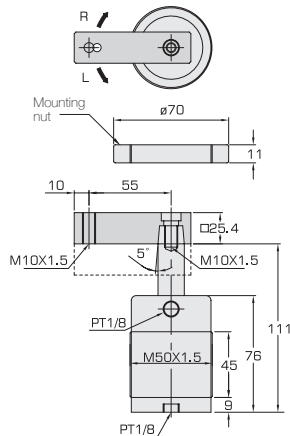
FHL32



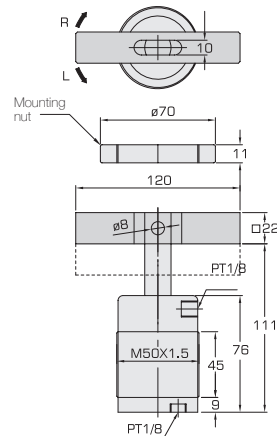
FHLD32



FHLT32

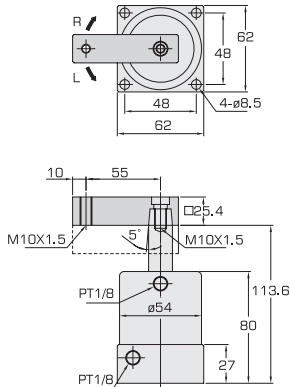


FHLDT32

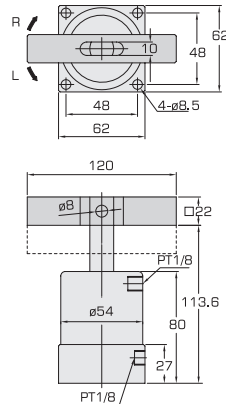


Dimensions (mm)

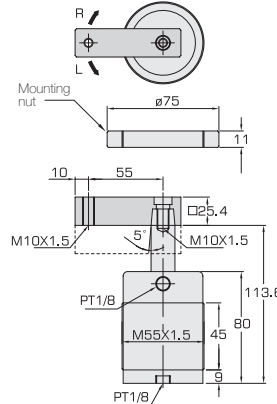
FHL40



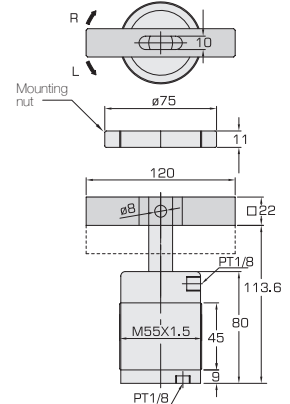
FHLD40



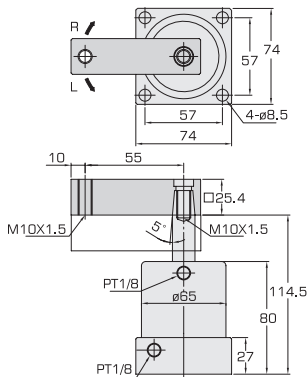
FHLT40



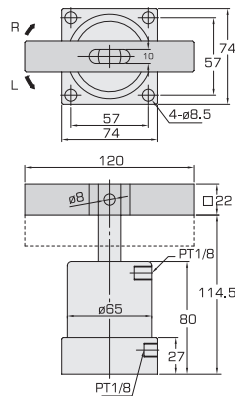
FHLDT40



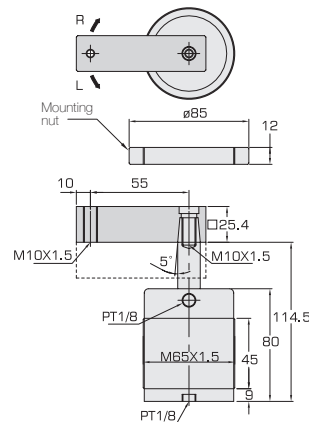
FHL50



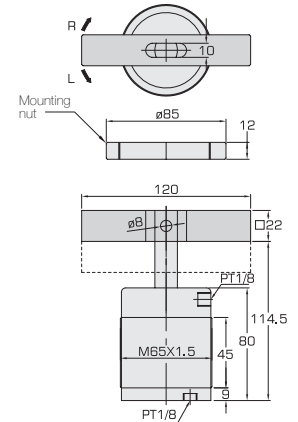
FHLD50



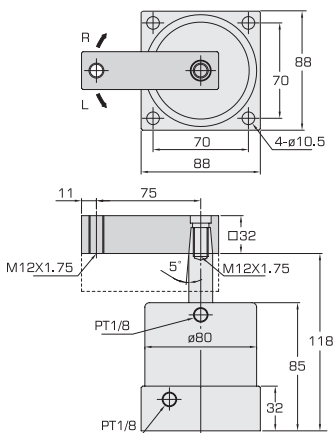
FHLT50



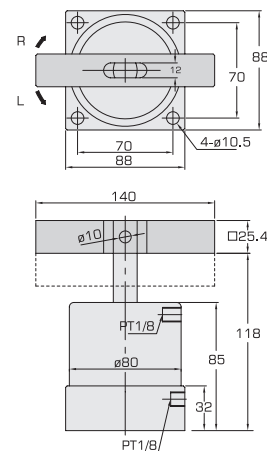
FHLDT50



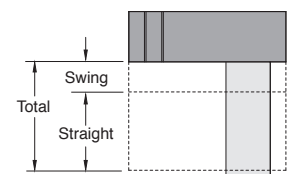
FHL63



FHLD63



Stroke Action



Stroke Action (mm) for FHL Series

Bore	Swing	Straight	Total
ø25	12	14	26
ø32	14	15	29
ø40	14	15	29
ø50	14	15	29
ø63	14	15	29

Please visit <http://portal.fabco-air.com/configure.php> for current pricing.
Specifications and prices subject to change without notice or incurring obligation

Fabco-Air, Inc. ■ 3716 N.E. 49th Avenue ■ Gainesville, FL 32609-1699
 ■ Telephone (352) 373-3578 ■ Fax (352) 375-8024 ■ E-Mail service@fabco-air.com
 ■ Web Site <http://www.fabco-air.com>