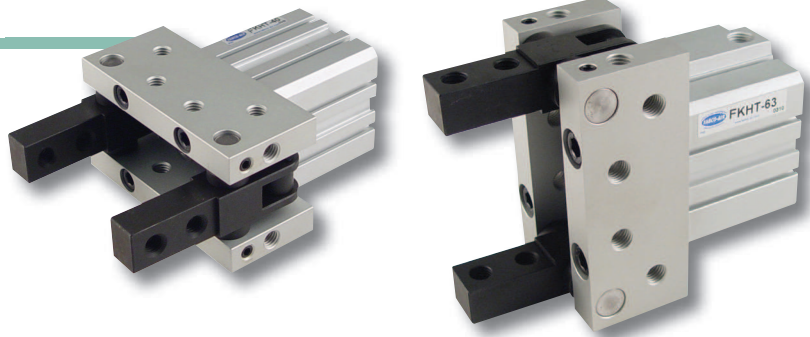


FKHT Series Angular, Toggle Type Grippers

Features

1. Grippers are ideal for heavy workpieces.
2. A toggle mechanism holds workpiece securely even when pressure drops.
3. Magnetic piston is standard feature.
4. Adding optional sensors enables "open" and "close" position sensing.
5. Gripper body is hardcoated aluminum ensuring abrasion and corrosion resistance.
6. No extra lubrication required.
7. Tapped mounting holes on 5 surfaces.



Specifications

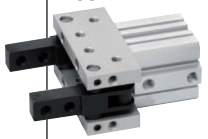
100 PSI MAX.

Model	FKHT			
Action	Double acting			
Bore (mm)	ø32	ø40	ø50	ø63
Media	Compressed air			
Min.operating pressure	15 psi			
Max.operating pressure	0.7 MPa (7 kgf/cm2) 100 psi			
Ambient & media temperature	5°C(41°F) ~ +60°C(140°F) Use filtered dry air			
Lubrication	None required or use ISO VG32			
Opening	-3°to 28°	-2°to 27°	-2°to 23°	-2°to 23°
*Effective grip force (lbf)	22 (L=100mm)	44 (L=120mm)	67 (L=150mm)	89 (L=180mm)
Weight kg (lb)	0.8(1.76)	1.09(2.4)	1.93(4.2)	2.8(6.2)

*Note: 58psi with 0° jaw angle and 'L' = gripping point. See page 2.

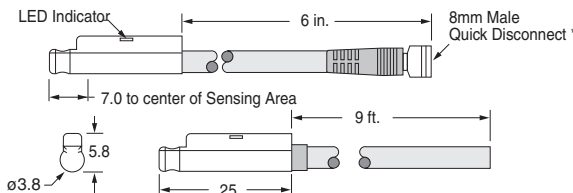
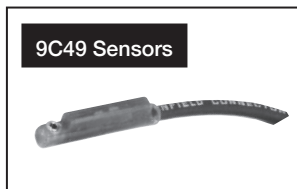
How to Order

FKHT – 32

Series	Bore	Price
Toggle Type 	ø32	-
	ø40	-
	ø50	-
	ø63	-


Type 9C49 Sensors are used with FKHT toggle type grippers. Please order sensors and female cordsets separately from the selection guides below.

Sensors



9C49 style sensors feature surge suppression, polarity protection, LED indicator, and extremely fast switching speeds. They slide into mating 4mm keyhole slots on either side of the cylinder housing and are easily positioned and locked in place with a set screw. They are offered in two styles: a quick connect style with a six inch pigtail and male connector, or a pre-wired style with a 9 foot lead.

Cordsets



Sensor connector 3 pin cord set

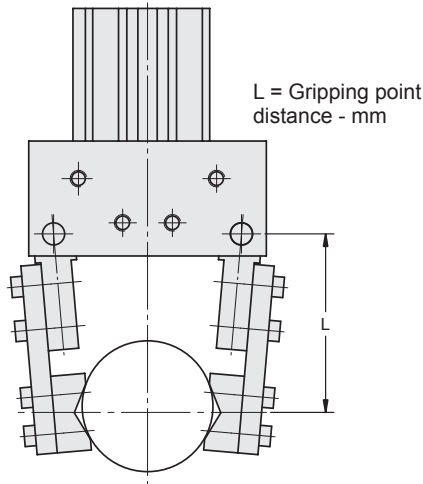
Female Cord Sets	Part No.	Price
1 Meter	CFC-1M	-
2 Meters	CFC-2M	-
5 Meters	CFC-5M	-

Sensor Selection Guide – Electrical Characteristics							Part Numbers and Prices			
Sensor Type	Function	Switching Voltage	Switching Current	Switching Power	Switching Speed	Voltage Drop	Prewired 9 ft.		Quick connect	
							Part No.	Price	Part No.	Price
Electronic LED and Sourcing	PNP Normally Open	6-30 VDC	0.2 Amp max.	6 Watts max.	1.5µs operate 0.5µs release	1.5 Volts	9C49-000-031	-	9C49-000-331	-
Electronic LED and Sinking	NPN Normally Open	6-30 VDC	0.2 Amp max.	6 Watts max.	1.5µs operate 0.5µs release	1.5 Volts	9C49-000-032	-	9C49-000-332	-

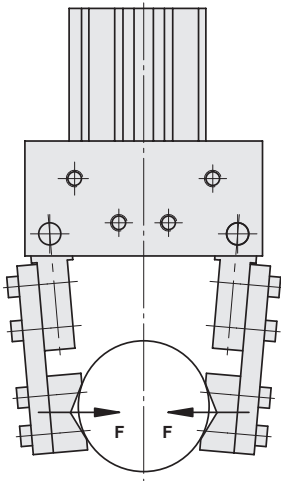
All sensors feature surge suppression, polarity protection, LED indicator, and extremely fast switching speeds.

Effective Gripping Force on external workpiece surfaces

- Workpiece gripping point should be within the range indicated in the graph



- Indication of effective gripping force
The effective gripping force shown in the graphs is expressed as F, which is the thrust of one finger, when both fingers and attachments are in full contact with the workpiece as shown in the figure below.



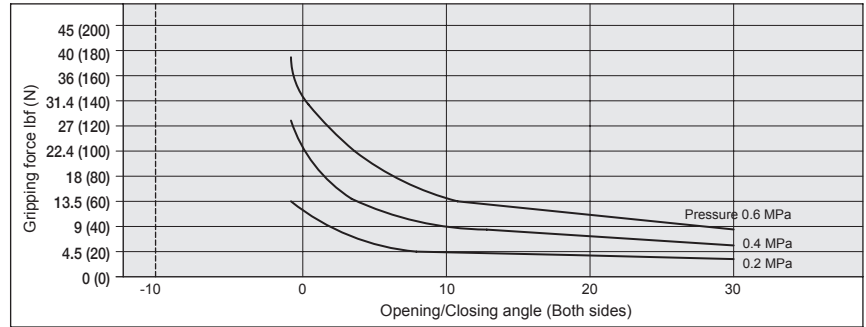
Warning

If a workpiece is to be gripped by using the toggle, make sure to periodically check that the workpiece has not shifted during the acceleration of the movement. If the workpiece is not gripped in a stable manner, it could shift or drop and create a dangerous situation. If the workpiece is not gripped in a stable manner, use shims on the attachment to adjust the grip. To verify the gripping condition, or to make any adjustments, make sure to do so in an area where the gripper or the workpiece will not fall.

The toggle mechanism works most effectively, and can hold a workpiece even if pressure drops, when the gripper fingers are closed to less than 0°.

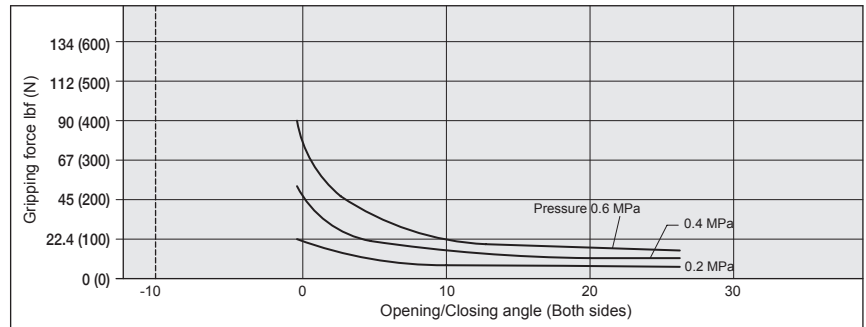
FKHT-32

L=100mm



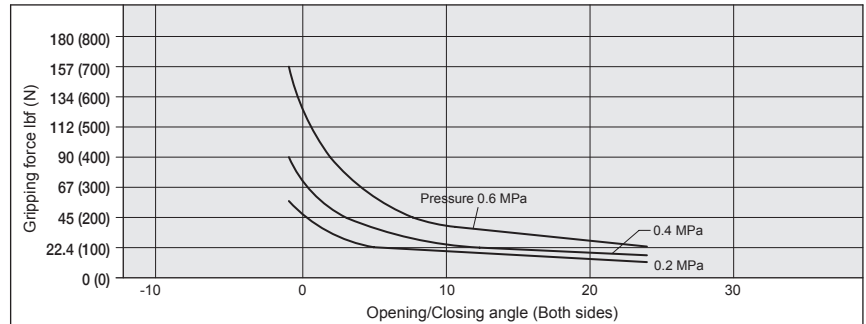
FKHT-40

L=120mm



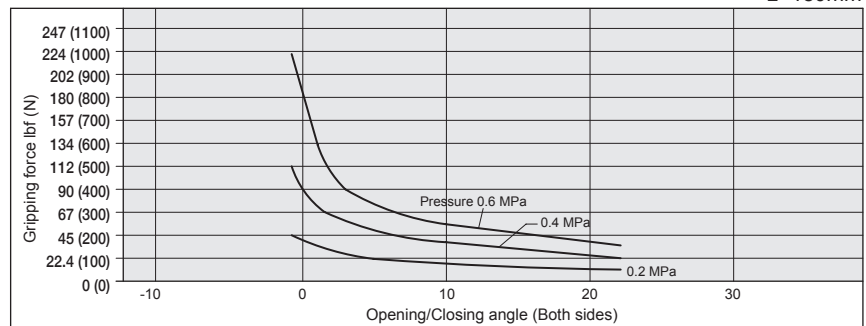
FKHT-50

L=150mm



FKHT-63

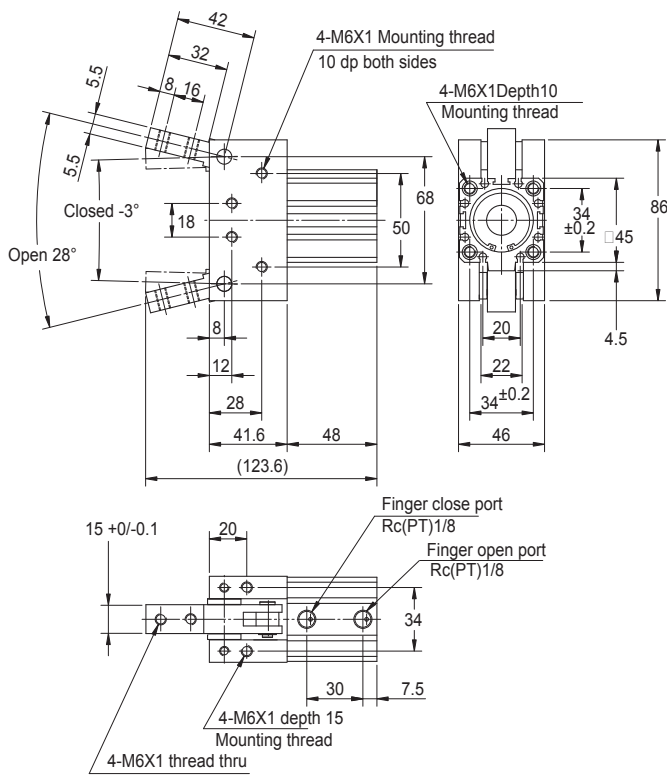
L=180mm



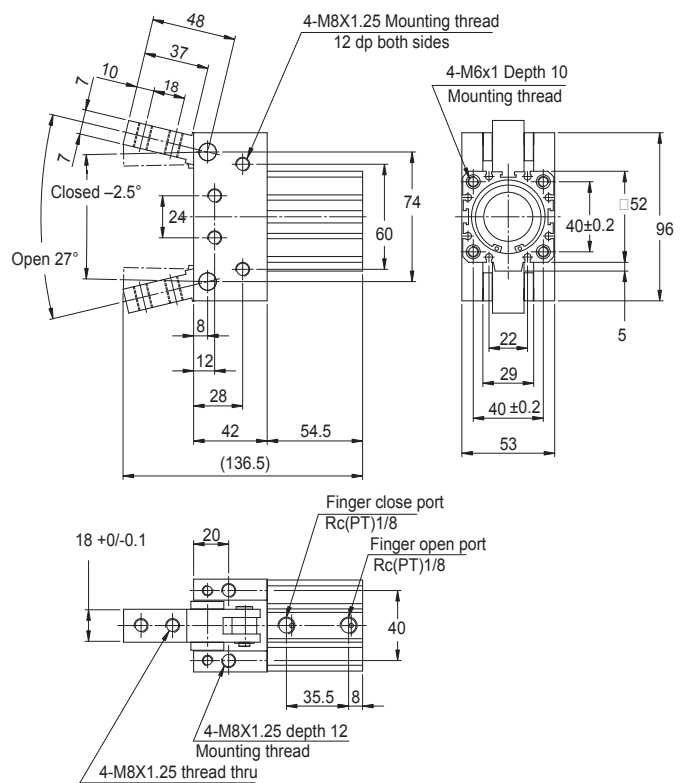
Conversions:
 lbf = N x 0.224 0.4 MPa = 58 psi
 0.2 MPa = 29 psi 0.6 MPa = 87 psi

**FKHT Series
Gripper Dimensions (mm)**

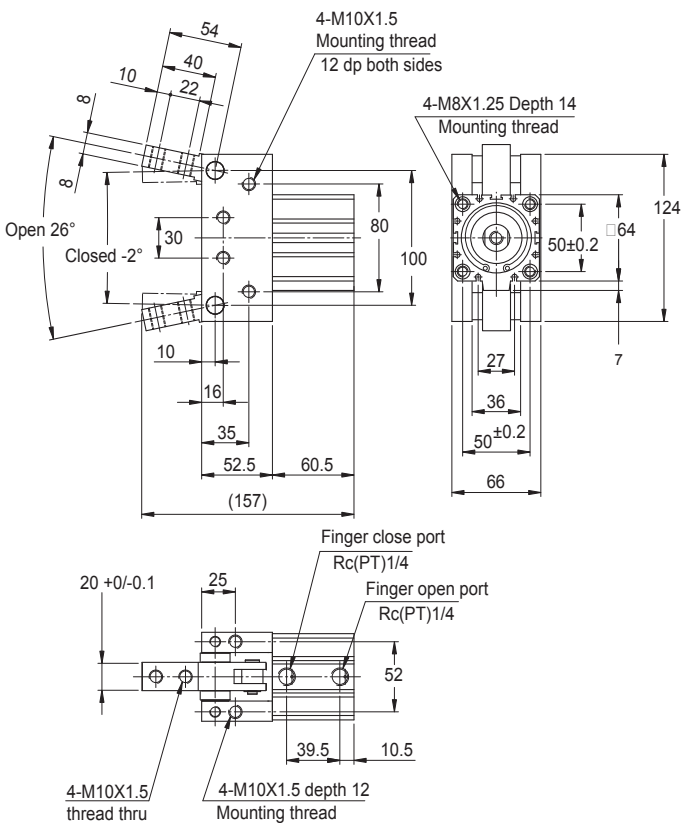
FKHT-32



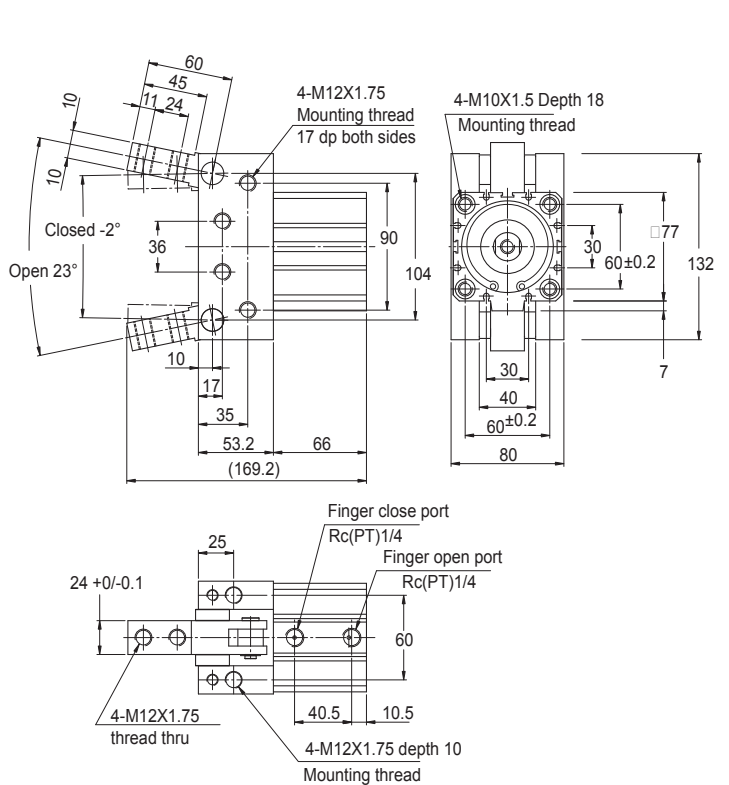
FKHT-40

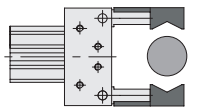
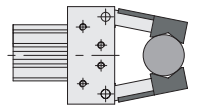
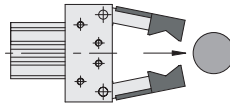






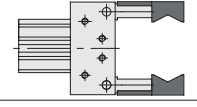
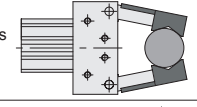
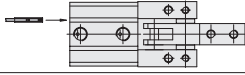
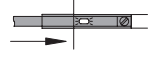
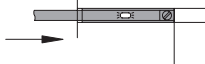

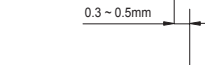
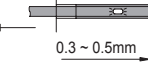
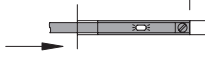


FKHT-50



FKHT-63

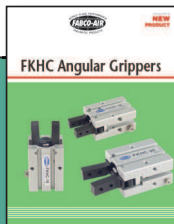


Detection Example		1. Confirmation of fingers in reset position	2. Confirmation of workpiece held	3. Confirmation of workpiece released	
Position to be detected for external gripping		Position of fingers fully open 	Position when gripping workpiece 	Position of fingers fully closed 	
	Operation of sensor	Switch turned on when fingers return. (LED ON)	Switch turned on when gripping a workpiece. (LED ON)	When a workpiece is held (Normal operation): Switch to turn OFF (LED not illuminating) When workpiece is not held (Abnormal operation): Switch to turn ON (LED ON)	
Detection Combination	One sensor				
	Two sensors				
How to determine sensor installation position	Step 1 Fully open the fingers		Step 1 Position fingers for gripping a workpiece		
	Step 2 Insert the sensor into the mounting slot in the direction shown in the drawing.				
	Step 3 Slide the sensor further in the direction of the arrow until LED illuminates		Step 3 Slide the sensor in the direction of the arrow until LED illuminates. Fasten it in a position 0.30 to 0.5 mm in the direction of the arrow beyond the position where the LED illuminates.		
	Step 4 Slide the sensor further until LED goes out				
	Step 5 Move the sensor in the opposite direction and fasten it at a position 0.3 to 0.5 mm beyond the point where indicator light illuminates.				

At no or low pressure, connect the sensor to a power supply and follow the directions.

Note: It is recommended that gripping a workpiece be performed close to the center of the finger stroke.
Note 2) When holding a workpiece close to the end of open/close finger stroke, detecting performance of the combinations listed above may be limited, depending on sensor hysteresis, etc.

Recent new product catalogs from FABCO-AIR



FKHC Angular Motion High Force Grippers
Catalog # FKHC-10



FKHL Series Wide Parallel Jaw Grippers
Catalog # FKHL-10



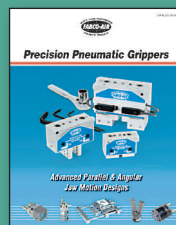
FKHQ Narrow Opening Parallel Grippers
Catalog # FKHQ-10



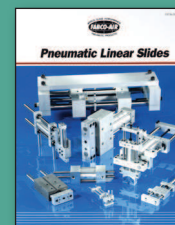
FKHZ Wide Opening Parallel Grippers
Catalog # FKHZ-10



Pneumatic Grippers Angular Motion
Catalog # FKA-09



Pneumatic Grippers, Parallel Jaw & Angular Motion - Catalog # GR-8



Linear Slides 6 Families
Catalog # LS-03



Pneumatic Rotary Actuators
Catalog # FRA.C-09