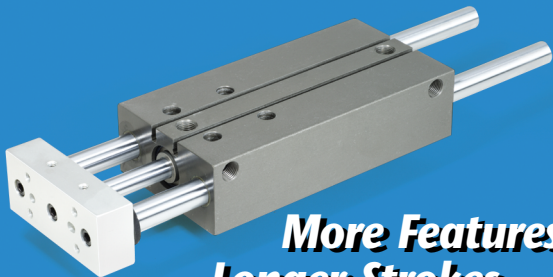


# ***Linear Thrusters***



***More Features.  
Longer Strokes.  
A Drop-In Interchange!***

The "GB" Series of linear slides is offered in 12, 20 and 32 mm bores with guideshafts 3/8", 1/2" and 3/4" dia., and strokes up to 10". Slides feature replaceable, high performance, self lubricating sleeve bearings and special ground, hard chrome plated guide shafts for highly accurate performance. Toolbars include slip fit dowel holes and slots for precise tooling alignment. The built-in air cylinders are repairable. Options include magnetic pistons, rear toolbars, adjustable stops and more!



*Get your copy of Bulletin GB-JA02*