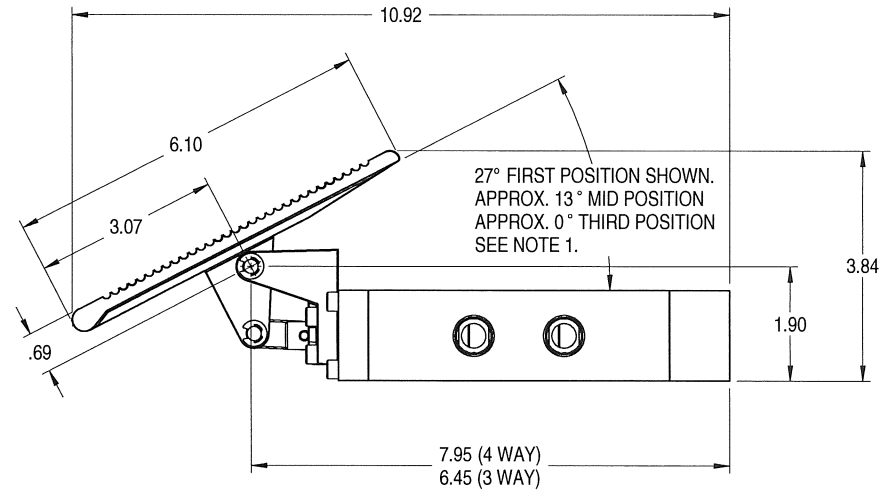
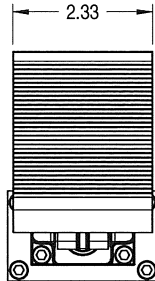
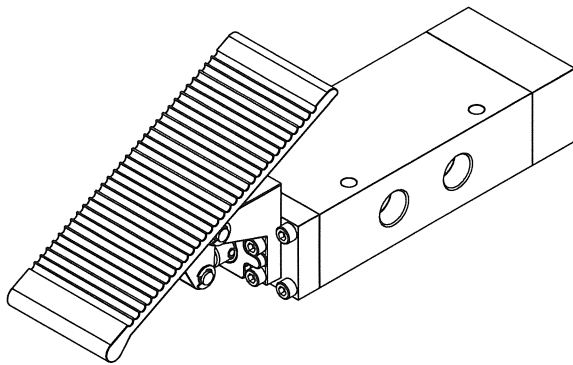
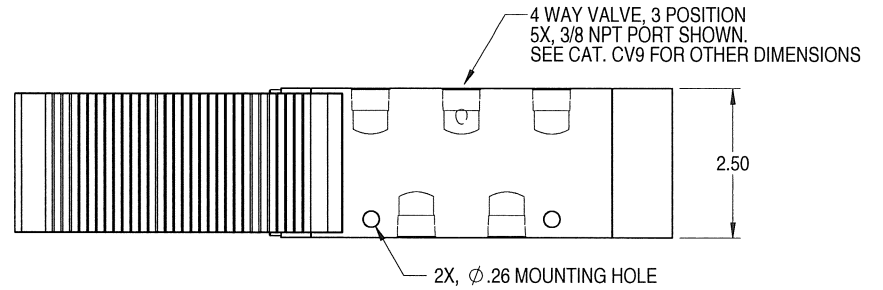


P/N

**FABCO FOOT TREADLE OPERATED DIRECTIONAL CONTROL VALVE
MODEL & PRICES (EFFECTIVE DATE AUG. 1, 2011)**

| MODEL | 3/8 NPT | 1/2 NPT | 1/2 NPT HIGH FLOW |
|---|---------------------|---------------------|----------------------|
| 2 POSITION 3 WAY SPRING RETURN | 383-FTS \$181.30 | 123-FTS \$181.30 | 123B-FTS \$213.15 |
| 2 POSITION 4 WAY SPRING RETURN | 38-FTS \$209.05 | 12-FTS \$209.05 | 12B-FTS \$262.15 |
| 3 POSITION 4 WAY SPRING CENTERED TYPE B SPOOL | 38-FTSB \$227.50 | 12-FTSB \$227.50 | N/A |
| 3 POSITION 4 WAY SPRING CENTERED TYPE F SPOOL | 38-FTSF \$227.50 | 12-FTSF \$227.50 | N/A |



NOTE:
2 POSITION VALVES USE FIRST & THIRD POSITION (27 ° RANGE).

FABCO-AIR
PHONE: (352) 373-3578
FAX: (352) 375-8024
E-MAIL: fabco@fabco-air.com

TITLE: FOOT TREADLE VALVE
FOR: FABCO POWER VALVE

MATERIAL:

| | | |
|----------------|-------|----------|
| FILE NAME | | |
| 12-FTSB-OL-M-P | | |
| SIZE | SCALE | DATE |
| B | 1:2 | 8/4/2011 |
| DRAWN BY | | |
| MIKE SPITZE | | |